



National Taxpayers Association
pesa zetu, haki yetu



KWALE COUNTY

CITIZENS REPORT CARD

FINANCIAL YEAR 2014-15



TABLE OF CONTENTS

2.0	Acknowledgement	I
1.0	Executive Summary	II
1.0	About NTA	v
2.0	About the Project	v
3.0	Research Methodology	vi
4.0	NTA Project categorization	vii
5.0	County summaries	ix
	County Profile	x
	Project profiles and digital pictures	1
	Challenges	33
	Recommendations	33
	Lessons learnt	33
	Conclusion	33



The findings expressed herein are those of the NTA and do not necessarily reflect the views of our partners.

© National Taxpayers Association
November, 2016

ACKNOWLEDGMENT

The National Taxpayers Association (NTA) wishes to acknowledge the contribution of various individuals who made this publication possible. This Pilot Follow Up County Citizen Report Card is a culmination of efforts from between Counties and the NTA for citizens to monitor revenue allocation and utilization to enhance transparency and accountability in the use of devolved public resources.

This citizen report card draws from the vast experience NTA has in carrying out social audits. We wish to acknowledge the following NTA Staff for their invaluable contribution; Michael Otieno, the Governance Advisor, Wolde Wesa, the National Coordinator, the Good Governance Project lead at NTA, Caroline Othim, with strategic and technical support from NTA regional coordinators namely Annah Katuki – Eastern, Deurence Onyango – Nyanza, Kennedy Elijah – Coast, Maryanne Mwangi – Central and Paul Odongo – Western who successfully piloted this project. Special thanks to the NTA ICT Officer, Thomas Mbuvi for his invaluable contribution to the compilation of the CRC.

Special thanks to the County Governments of Busia, Kisumu, Kitui, Kwale and Nyeri, the Office of the Auditor General, the Commission on Administration of Justice and Council of Governors for their support and collaborative efforts towards the development of the report.

Our sincere gratitude goes to GIZ and the Embassy of Finland for their generous financial support, which went a long way to make this publication a possibility.

EXECUTIVE SUMMARY

Corruption remains an inherent problem in utilization of revenue and public resources. This is in spite of official state led anti-corruption initiatives. Despite these reforms and efforts, corruption remains a fundamental problem. The public sector requires rethinking its approach to public finances oversight in the wake of questionable financial malpractices covering the entire spectrum in the public sector. If left alone the formal oversight institutions will not achieve much in the fight against corruption and wastage of taxpayers' money. There is therefore need for citizens to monitor resources allocated to projects at the sub national level.

The project sought to contribute to enhance social audit interventions through empowered citizens to fight corruption and abuse of power. The project particularly intended to ensure at the end of 2016, at least 40 percent of projects identified with issues through measures and action put in place-by the county government to enhance prudent utilisation of the resources. The Social Audit process allows citizens to effectively engage government in monitoring and to demand accountability, review the performance of their service providers and devolved fund managers, agree on their collective demands, and articulate their priorities to the duty bearers. The citizens' report card serves three important and interrelated purposes, that is; a source of information for citizens, a tool for citizens to hold leaders accountable, and documenting development process at the local level.

NTA commissioned a pilot initial assessment of 199 county projects (F/Y 2014/15) in 2015, across five counties selected purposively. These counties are : Kisumu - 40, Busia - 49, Nyeri - 33, Kwale - 41 and Kitui - 36 to monitor the use and management of public resources using Citizens Report Cards (CRCs). A number of activities were carried out culminating in the development of the initial five County Citizen Report Cards (CRCs). These were well sequenced project components and activities that included; development of data collection tool, partnership building with respective counties, training of community based data collectors, field based project assessment, constructive engagement with county officials, dissemination of the report both at the county and national level,

The follow-up is informed by the constructive engagement exercise where NTA and the County Government jointly co-created an action plan to address the issues identified for improvement.

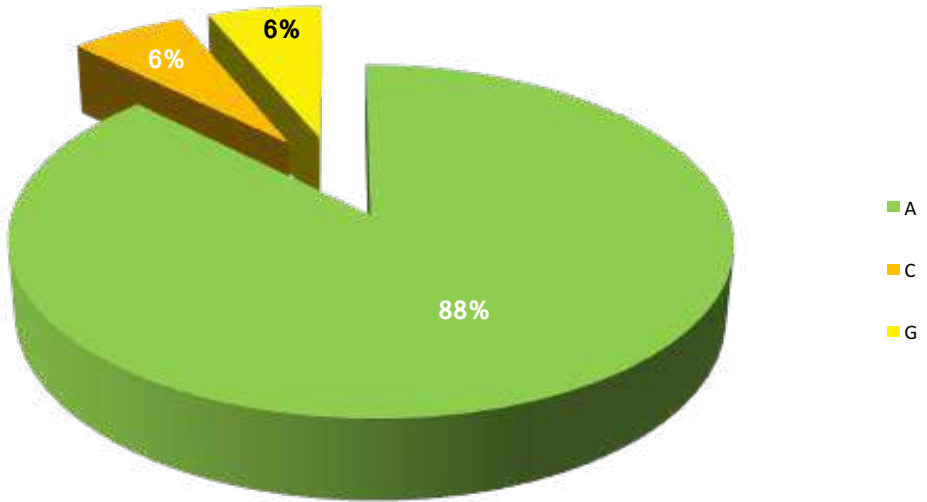
In this follow-up phase, NTA assessed 119 projects (Kisumu - 30, Busia - 34, Nyeri - 21, Kwale 16 and Kitui - 18.) Identified with issues for resolution from the initial assessment. These are projects which were either badly implemented, ongoing, abandoned, delayed or ghost projects. The average Fix Rate calculated for this follow-up phase is 55%.

$$\text{Fix Rate} = \frac{\text{Number of resolved problematic projects}}{\text{Number of problematic projects in the initial assessment}} \times 100$$

This report therefore highlights the progress achieved so far by counties in implementing the action plan commitments agreed upon during the initial phase constructive engagements, the lessons learnt thereof and suggestion on a number of general and counties specific recommendation with a view of continuously improving county level implementation and enhancing service delivery.

FIX RATE MATRIX

CATEGORIES	PROJECTS	PERCENTAGE
A	14	88%
C	1	6%
G	1	6%
TOTAL	16	100%



	PROJECTS	PERCENTAGE
Total Projects in the initial phase	39	100%
Total well implemented projects in initial phase	25	64%
Total Projects with listed issues in initial phase	14	36%
Fix Rate expected	16	100%
Fix Rate realised	15	93%
Fix Rate not realised	1	7%

1.0 About NTA

NTA is a national, independent, non-partisan organization focused on promoting good governance in Kenya Since 2006,

NTA has been implementing programmes focused on citizen demand for accountability through monitoring of the quality of public service delivery and the management of devolved funds.

It has achieved this through partnership building, citizen empowerment and development of social accountability tools (e.g. Citizen Report Cards and Community Scorecards).

NTA is fully independent of government; however, it is committed to working with the government to improve the quality of public service delivery and the management of devolved funds.

Vision: An accountable, citizen-responsive government delivering quality services to all.

Mission: To promote accountable, effective and efficient collection and utilization of public resources through citizen empowerment, enhancing public service delivery and partnership building.

2.0 About the Project

NTA with the support of GIZ and the Ministry of Foreign Affairs of Finland is implementing a project aimed at promoting good governance, transparency and accountability at the sub-national level through effective citizen participation, oversight in monitoring the management of devolved funds and problem solving.

The project location is Busia, Kisumu, Kitui, Nyeri, and Kwale counties. The project is aimed at achieving the following specific objectives; -

1. To establish partnerships with institutions at national and sub national for information sharing and redress mechanisms.
2. To enhance the capacity of citizens to effectively monitor the management of public funds.
3. To monitor implementation of public projects through development, production and dissemination of citizen report cards.



3.0 Methodology

1. Citizen empowerment (NTA staff and community monitors)
2. Communication to County Governments (Busia, Kisumu, Kitui, Nyeri, and Kwale counties) and oversight institutions e.g. the EACC, Office of the Auditor General and Commission on Administrative Justice (Ombudsman)
3. Follow up site visit to selected projects (problematic and category C projects) funded in FY 2014/15 across sectors e.g. health, education, water and sanitation etc.
4. Interview users (using Development Check app and beneficiary questionnaires)
5. Take digital photos.
6. Technical assessment and classification of the projects by an independent Engineer/Quantity Surveyor
7. Constructive engagement meetings with County Governments for comments on draft CRC reports and commitments to address recommendations.
8. Revisiting of contentious projects.
9. Development of final CRCs
10. Dissemination of CRC reports

4.0 Nta project categorization

<p>Category A Projects Well implemented, completed projects</p>	<p>This category is for projects that scored above 50% by the engineer during the technical assessment and were found to be well built; with good value for money (i.e. the budget spent is commensurate to the project delivered).</p>
<p>Category B Projects Badly implemented, complete and incomplete projects</p>	<p>This category is for projects, which had scored less than 50% on the Technical Assessment Form, and were poorly constructed with no commensurate value for money, and/or with budgets much larger than what is actually delivered.</p>
<p>Category C Projects Well-implemented, incomplete projects</p>	<p>This category is for projects, which had scored above 50% on the Technical Assessment Form, and the projects were well implemented but on-going, i.e. Money had been used to build a structure of good quality, but the construction is incomplete.</p>
<p>Category D Projects Abandoned Projects</p>	<p>This category is for incomplete projects and which have not consistently been receiving financial allocation for the continuation of project implementation.</p>



Category E Projects Ghost projects	This category is for projects, which had been officially, allocated funds but the project did not physically exist at the time of study and money was proven spent i.e. it is a ghost project.
Category F Projects Reallocated Funds	This category is for projects that were not implemented for the reason that the funds were reallocated to other projects.
Category G Projects Delayed implementation	The project is officially allocated funds but the implementation has not started and funds are in still in the Account.

Follow Up Summary findings from the Audit of the County projects

Project Assessment Classification	No. Of Projects	Budget Allocated [KSHS]	Budget Spent [KSHS]	Outstanding Balance [KSHS]	Unaccounted [KSHS]
Well Implemented Projects	14	91,888,156.20	91,888,156.20	0	
Badly Implemented Projects					
Ongoing Projects	1	14,446,617.80	14,446,617.80	0	
Abandoned Projects					
Delayed Implementation	1	9,976,823.00	0	9,976,823.00	
Total	16	116,311,597.00	106,334,774.00	9,976,823.00	

PROFILE OF KWALE COUNTY

Kwale County is one of the six counties in the coast region.

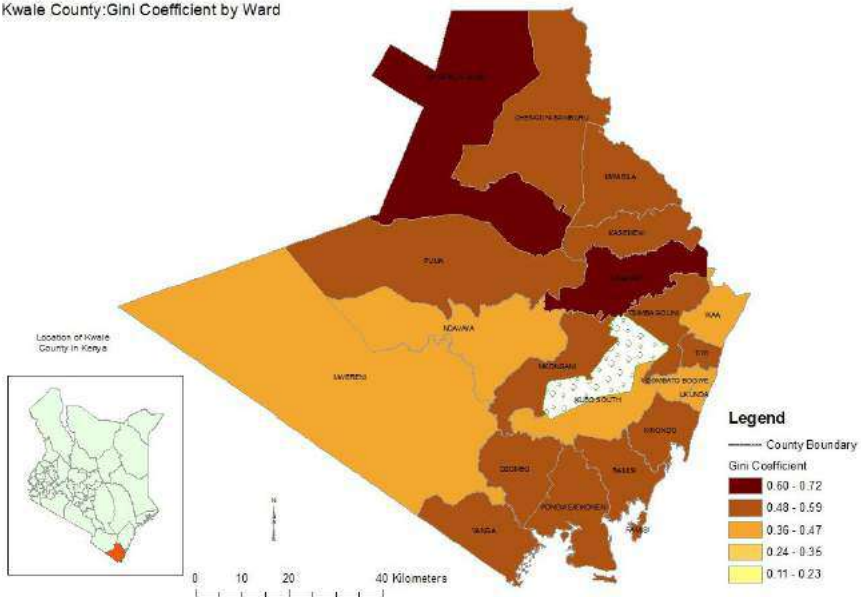
Kwale County is located in south coast of Kenya, it borders the Republic of Tanzania to the South West, and the following Counties; Taita Taveta to the West, Kilifi to the North,

Mombasa to the North East and the Indian ocean. The county has four sub counties namely: Kinango, Lunga Lunga, Matuga and Msambweni and _ wards.

According to the 2009 Population and Housing Census, the county population is 649, 931.

Its main economic activity is tourism and it's a major tourist site (south coast) with rolling white beaches. The poverty rate in Kwale is 71.4 percent against the national average of 47.2 population living below the poverty line.

Kwale County:Gini Coefficient by Ward



Project Name: Mvindení Cabro Blocks Paving

Sub County: MSambweni

Ward: Diani

Project Activity: Paving using cabro blocks

INITIAL ASSESSMENT



Assessment date

10th September 2015

Project Status

Ongoing and in use

Total funds awarded

Kshs. 6,971,252.00

Comments

Good quality materials such as Cabro blocks were used with river sand.

Total funds spent

Kshs. 6,971,252.00

The project adhered to Specifications. The Quality of workmanship is appropriate but there is need to fill sand on edges bordering the keystones.

Outstanding Balance

Kshs. 0

Project Classification

Category C



Project Name: Mvindeneni Cabro Blocks Paving

Sub County: MSambweni

Ward: Diani

Project Activity: Paving using cabro blocks

FOLLOW UP ASSESSMENT



Assessment date

4th November 2016

Project Status

Complete and in use

Total funds awarded

Kshs. 6,971,252.00

Comments

The project entailed paving of the county government of Kwale trade centre. Highly compressed Cabro blocks were used with river sand following the required specifications.

Total funds spent

Kshs. 6,971,252.00

Good quality of workmanship has been applied on the project. It was implemented within the budget and reflects value for money

Outstanding Balance

Kshs. 0

Project Classification

Category A



Project Name: Ban'ga Youth Polytechnic

Sub County: Kinango

Ward: Mackinnon Road

Project Activity: Construction of the youth polytechnic (4 classrooms)

INITIAL ASSESSMENT



Assessment date
1st September 2015

Project Status
Badly implemented /
Incomplete

Total funds awarded
Kshs. 5,370,664.28

Comments

Longitudinal cracks on lintels of doors and on the floors are seen with weakening of the ceiling. Repairs to the floor were already being on the cracks. The workmanship applied does not show value for money. The county government officials highlighted during the validation meeting on 2nd December 2015 that the contractor had been stopped due to

Total funds spent
Kshs. 3,697,496.17

Outstanding Balance
Kshs. 1,673,168.11

Project Classification
Category B



Project Name: Ban'ga Youth Polytechnic

Sub County: Kinango

Ward: Mackinnon Road

Project Activity: Construction of the youth polytechnic (4 classrooms)

FOLLOW UP ASSESSMENT



Assessment date
3rd November 2016

Total funds awarded
Kshs. 5,370,664.28

Total funds spent
Kshs. 5,370,664.28

Outstanding Balance
Kshs.0

Project Classification
Category A

Project Status
Complete and in use
Comments

The county government officials highlighted during the validation meeting on 2nd December 2015 that the contractor had been stopped to redo the substandard works.

On revisiting the project, the project defects had been rectified with major structural defects improved. The foundation and the wall structure had been improved.



Project Name: Msambweni Hospital

Sub County: Msambweni

Ward: Msambweni

Project Activity: Renovation of the roof, doors, installation of roof Support columns and painting

INITIAL ASSESSMENT



Assessment date

9th September 2015

Total funds awarded

Kshs. 18,967,730.26

Total funds spent

Kshs. 18,967,729.40

Outstanding Balance

Kshs. 0.86

Project Classification

Category B

Project Status

Badly implemented, incomplete project

Comments

The finishing works in the drug Store and fittings (doors) have been installed. The contractor has reviewed the works on installation of aluminium windows particularly for windows which could not open, now they can open. The windows in the wards have been repaired. The contractor has also re-installed the electrical fittings. The workmanship is of high quality.



Project Name: Msambweni Hospital

Sub County: Msambweni

Ward: Msambweni

Project Activity: Renovation of the roof, doors, installation of roof Support columns and painting

FOLLOW UP ASSESSMENT



Assessment date

4th November 2016

Total funds awarded

Kshs. 18,967,730.26

Total funds spent

Kshs. 18,967,730.26

Outstanding Balance

Kshs. 0

Project Classification

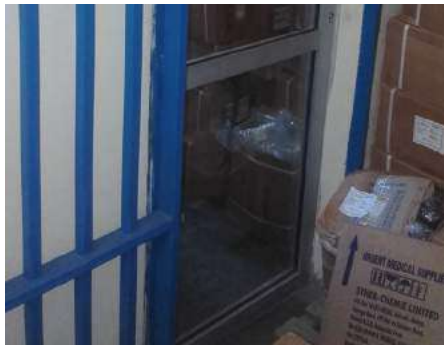
Category A

Project Status

Complete and use

Comments

The finishing works in the drug Store and fittings(doors) have been installed .The contractor has reviewed the works on instal-lation of aluminium windows par-ticularly for windows which could not open,now they can open. The windows in the wards have been repaired. The contractor has also re-installed the electrical fittings. The workmanship is of high qual-ity.



Project Name: Msambweni Hospital Staff Quarters

Sub County: Msambweni

Ward: Msambweni

Project Activity: Installation of roof, gutters, painting of the house and installation of the water tower

INITIAL ASSESSMENT



Assessment date

9th September 2015

Total funds awarded

Kshs. 3,000,000.00

Total funds spent

Kshs. 3,000,000.00

Outstanding Balance

Kshs. 0

Project Classification

Category C

Project Status

Ongoing and not in use

Comments

The project was still being implemented at the time of assessment although good quality of materials such as trusses from good quality timber and galvanized iron sheets have been used. Safety standards had been observed and the implementation was within the estimated budget. The project had not been completed.



Project Name: Msambweni Hospital Staff Quarters

Sub County: Msambweni

Ward: Msambweni

Project Activity: Installation of roof, gutters, painting of the house and installation of the water tower

FOLLOW UP ASSESSMENT



Assessment date

4th November 2016

Total funds awarded

Kshs. 3,000,000.00

Total funds spent

Kshs. 3,000,000.00

Outstanding Balance

Kshs. 0

Project Classification

Category A

Project Status

Complete and in use

Comments

Good quality materials had been used and safety standards observed. The implementation was done within the estimated budget. It has improved delivery of service through provision of shelter to the doctors and improve accessibility to hospital services



Project Name: Kinango Stalls

Sub County: Kinango

Ward: Kinango

Project Activity: Construction of stalls

INITIAL ASSESSMENT



Assessment date

1st September 2015

Total funds awarded

Kshs. 9,849,049.60

Total funds spent

Kshs. 8,054,796.00

Outstanding Balance

Kshs. 1,794,253.60

Project Classification

Category C

Project Status

Well implemented / ongoing

Comments

The project is still ongoing, it is well implemented; the materials used are of correct specification. Safety standards will need to be taken care of in the course of implementation of the project.



Project Name: Kinango Stalls

Sub County: Kinango

Ward: Kinango

Project Activity: Construction of stalls

FOLLOW UP ASSESSMENT



Assessment date

3rd November 2016

Project Status

Complete and in use

Total funds awarded

Kshs. 9,849,049.60

Comments

The project is complete, it is well implemented; the materials used were of up to the standard. The residents of Kinango appreciate the project to have improved trading activities in the area.

Total funds spent

Kshs. 9,849,049.60

Outstanding Balance

Kshs. 0

Project Classification

Category A



Project Name: Tiwi Market

Sub County: Matuga

Ward: Tsimba -Tiwi

Project Activity: Renovation of the market

INITIAL ASSESSMENT



Assessment date

7th September 2015

Total funds awarded

Kshs. 5,939,130.00

Total funds spent

Kshs. 4,599,000.00

Outstanding Balance

Kshs. 1,340,130.00

Project Classification

Category C

Project Status

Ongoing project

Comments

Good quality materials i.e. galvanized iron sheets, reinforced steel for the terraces and burglar proof doors, coral machine cut blocks were used on the project. The quality of works on the superstructure was achieved and the project was accomplished within the projected budget. Adherence to safety standards will only be determined once the project is complete. It has high finishing standards.



Project Name: Tiwi Market

Sub County: Matuga

Ward: Tsimba -Tiwi

Project Activity: Renovation of the market

FOLLOW UP ASSESSMENT



Assessment date

5th November 2016

Total funds awarded

Kshs. 5,939,130.00

Total funds spent

Kshs. 5,939,130.00

Outstanding Balance

Kshs.0

Project Classification

Category A

Project Status

Complete and in use

Comments

The project is complete. Good quality materials were used on the project. The quality of finishing works applied on the project are of high standard ethics on safety were considered in finishing the project. The project has improved trading activities in the area.



Project Name: Kwale Stadium

Sub County: Matuga

Ward: Golini

Project Activity: Construction of sports complex

INITIAL ASSESSMENT



Assessment date
9th September 2015

Project Status
Incomplete and not in use

Total funds awarded
Kshs. 14,446,617.80

Comments
The project had just recently begun; excavation and compression were ongoing.

Total funds spent
Kshs. 14,446,617.80

Although not much has been done the progress of the project is good.

Outstanding Balance
Kshs.0

Project Classification
Category C



Project Name: Kwale Stadium

Sub County: Matuga

Ward: Golini

Project Activity: Construction of sports complex

FOLLOW UP ASSESSMENT



Assessment date

5th November 2016

Total funds awarded

Kshs. 14,446,617.80

Total funds spent

Kshs. 14,446,617.80

Outstanding Balance

Kshs.0

Project Classification

Category C

Project Status

Incomplete and not in use

Comments

Excavation and compression is complete. The project is multi-phased thus the project implementation is awaiting accumulation of funds from the county government and other agencies of national government because its has a projected initial cost of Kshs 400 million over a period of 4 years. It is awaiting for co-funding from other agencies.



Project Name: Baraza Park

Sub County: Matuga

Ward: Golini

Project Activity: Rehabilitation of recreation facilities

INITIAL ASSESSMENT



Assessment date

6th September 2015

Total funds awarded

Kshs. 11,255,757.24

Total funds spent

Kshs. 10,410,000.00

Outstanding Balance

Kshs. 845,757.24

Project Classification

Category C



Project Status

Ongoing

Comments

Good quality coral blocks and galana slabs were used. The works took into consideration the drainage.

The accomplished work was within the estimated costs. So far the project has commensurate value for taxpayers' money.



Project Name: Baraza Park

Sub County: Matuga

Ward: Golini

Project Activity: Rehabilitation of recreation facilities

FOLLOW UP ASSESSMENT



Assessment date

6th November 2016

Project Status

Complete and in use

Total funds awarded

Kshs. 11,255,757.24

Comments

The project has observed high standards on its workmanship and materials used. The accomplished work was within the estimated costs. So far the project has a commensurate value for taxpayers' money. The project has improved the environment of the recreational facility.

Total funds spent

Kshs. 11,255,757.24

Outstanding Balance

Kshs.0

Project Classification

Category A



Project Name: Kabuyuni Health Centre

Sub County: Matuga

Ward: Shimba hills

Project Activity: Construction of maternity block

INITIAL ASSESSMENT



Assessment date
 6th September 2015

Project Status
 Ongoing

Total funds awarded
 Kshs. 2,864,950.00

Comments

The project adhered to the required specifications. The roofing and finishes were well done using good quality materials. Coral machine cut blocks and galvanized iron sheets were used on the project. The project costing is approximated at Kshs 1.8 million.

Total funds spent
 Kshs. 1,913,222.60
Outstanding Balance
 Kshs. 951,727.40

Project Classification
 Category C



Project Name: Kabuyuni Health Centre

Sub County: Matuga

Ward: Shimba hills

Project Activity: Construction of maternity block

FOLLOW UP ASSESSMENT



Assessment date

6th November 2016

Project Status

Complete and in use

Total funds awarded

Kshs. 2,864,950.00

Comments

The project is complete, adhered to the required specifications.

Total funds spent

Kshs. 2,864,950.00

High quality building materials were used on the project. Safety standards and consideration for people with special needs has been incorporated into the project. The project costing is commensurate to the works implemented.

Outstanding Balance

Kshs.0

Project Classification

Category A



Project Name: Madzimalume Health Centre

Sub County: Matuga

Ward: Matuga

Project Activity: Construction of maternity unit

INITIAL ASSESSMENT



Assessment date

8th September 2015



Project Status

Ongoing

Total funds awarded

Kshs. 2,715,884.00

Total funds spent

Kshs. 1,655,229.40

Outstanding Balance

Kshs. 1,060,654.60

Project Classification

Category C

Comments

So far the project is well implemented; the assessment revealed good workmanship in addition to using good quality materials; machine cut concrete blocks were used for walling and galvanized iron sheets was used for roofing. The project was implemented within the estimated cost.



Project Name: Madzimalume Health Centre

Sub County: Matuga

Ward: Matuga

Project Activity: Construction of maternity unit

FOLLOW UP ASSESSMENT



Assessment date

7th November 2016

Project Status

Complete and not in use

Total funds awarded

Kshs. 2,715,884.00

Comments

The project is complete; good workmanship was applied on it accompanied by good quality materials;The project is well implemented within the budgeted cost.

Total funds spent

Kshs. 2,715,884.00

Outstanding Balance

Kshs.0

Project Classification

Category A



Project Name: Mzizima Health Centre

Sub County: Lunga Lunga

Ward: Pongwe Kidimu

Project Activity: Construction of maternity block

INITIAL ASSESSMENT



Assessment date
9th September 2015

Project Status
Ongoing

Total funds awarded
Kshs. 3,466,209.00

Total funds spent
Kshs. 910,348.38

Outstanding Balance
Kshs. 2,555,860.62

Project Classification
Category C

Comments

The project adhered to the specifications except for the ramp for people with special needs, which is yet to be installed. Good quality materials such as treated timber for trusses and machine cut coral blocks were used on the project. The works on the project up to the time of assessment were within the estimated costs.



Project Name: Mzizima Health Centre

Sub County: Lunga Lunga

Ward: Pongwe Kidimu

Project Activity: Construction of maternity block

FOLLOW UP ASSESSMENT



Assessment date

7th November 2016

Project Status

Complete and in use

Total funds awarded

Kshs. 3,466,209.00

Comments

The project adhered to the specifications, a ramp was included. Good quality materials were used on the project. The project has been implemented within the estimated budget. The finishing works are of high quality

Total funds spent

Kshs. 3,466,209.00

Outstanding Balance

Kshs.0

Project Classification

Category A



Project Name: Nyumba Sita Stalls

Sub County: Msambweni

Ward: Msambweni

Project Activity: Construction of stalls

INITIAL ASSESSMENT



Assessment date
9th September 2015

Project Status
Ongoing project

Total funds awarded
Kshs. 4,308,601.00

Comments

Good quality materials such as coral machine cut blocks and re-inforced steel was used on the project. The workmanship was good with the substructure and Superstructure supported with strong columns and ring beams.

Total funds spent
Kshs. 4,308,601.00

Outstanding Balance
Kshs.0

Project Classification
Category C



Project Name: Nyumba Sita Stalls

Sub County: Msambweni

Ward: Msambweni

Project Activity: Construction of stalls

FOLLOW UP ASSESSMENT



Assessment date
8th November 2016

Project Status
Complete and not in use

Total funds awarded
Kshs. 4,308,601.00

Comments
 The project is complete. The standard of project implementation is of high quality appropriate finishing has been applied on the project..Balloting for the award of stalls has been undertaken.

Total funds spent
Kshs. 4,308,601.00

Outstanding Balance
Kshs.0

Project Classification
Category A



Project Name: Mwangunda Health Centre

Sub County: Msambweni

Ward: Dzombo

Project Activity: Construction of staff quarters

INITIAL ASSESSMENT



Assessment date
9th September 2016

Project Status
Ongoing project

Total funds awarded
Kshs. 4,874,060.16

Total funds spent
Kshs. 1,840,822.75

Outstanding Balance
Kshs. 3,033,237.41

Project Classification
Category C

Comments
The project was well implemented although it was still ongoing. The quality of workmanship and materials used is up to the standards.



Project Name: Mwangunda Health Centre

Sub County: Msambweni

Ward: Dzombo

Project Activity: Construction of staff quarters

FOLLOW UP ASSESSMENT



Assessment date

8th November 2016

Project Status

Complete and not in use

Total funds awarded

Kshs. 4,874,060.16

Comments

The project was implemented within the required Specifications. The Valuation of the project is commensurate to the amount spent. The project will improve health centre officials working conditions.

Total funds spent

Kshs. 4,874,060.16

Outstanding Balance

Kshs.0

Project Classification

Category A



Project Name: Kwale X-Ray Centre

Sub County: Matuga

Ward: Golini

Project Activity: Construction of X-Ray building

INITIAL ASSESSMENT



Assessment date
6th September 2015



Project Status
Ongoing project

Total funds awarded
Kshs. 9,808,762.80

Total funds spent
Kshs. 7,515,075.15

Outstanding Balance
Kshs. 2,293,687.65

Project Classification
Category C

Comments

Good quality materials i.e. machine cut coral blocks and galvanized iron sheets used for walling and roofing respectively. The ceiling height and finishing works is up to the standards. The project was within the estimated cost at the time of assessment.



Project Name: Kwale X-Ray Centre

Sub County: Matuga

Ward: Golini

Project Activity: Construction of X-Ray building

FOLLOW UP ASSESSMENT



Assessment date
9th November 2016

Project Status
Complete and not in use

Total funds awarded
Kshs. 9,808,762.80

Comments
High quality of standards were applied on the project works and procuring materials. The project has been certified by the radiation protection board. The lead plate was also being procured.

Total funds spent
Kshs. 9,808,762.80

Outstanding Balance
Kshs. 0

Project Classification
Category A



Project Name: Eshu Health Centre

Sub County: Msambweni

Ward: Eshu

Project Activity: Construction of maternity unit

INITIAL ASSESSMENT



Assessment date

7th September 2015

Project Status

Ongoing project

18th May 2016

Total funds awarded

Kshs. 2,496,076.00

Comments

The project had stalled. Then the County Government terminated the contract of the initial contractor and appointed new contractor who had effectively implemented the project to almost completion.

Total funds spent

Kshs. 845,658.39

Outstanding Balance

Kshs. 1,650,417.61

Project Classification

Category C



Project Name: Eshu Health Centre

Sub County: Msambweni

Ward: Eshu

Project Activity: Construction of maternity unit

FOLLOW UP ASSESSMENT



Assessment date

9th November 2016

Project Status

Complete and in use

Total funds awarded

Kshs. 2,496,076.00

Comments

During follow-up assessment the project implementation had been concluded. The project has improved maternal services in the area. The quality of works applied on the project reflects value for money.

Total funds spent

Kshs. 2,496,076.00

Outstanding Balance

Kshs. 0

Project Classification

Category A



Project Name: Kinango Ward Administration Office

Sub County: Kinango

Ward: Kinango

Project Activity: Construction of the ward administration office

INITIAL ASSESSMENT



Assessment date

9th September 2015

Project Status

Not implemented

Total funds awarded

Kshs. 9,976,823

Comments

The project implementation had not commenced at the time NTA assessed the project.

Total funds spent

Kshs. 0

The project has delayed due to project land disagreement.

Outstanding Balance

Kshs. 9,976,823

Project Classification

Category G



Project Name: Kinango Ward Administration Office

Sub County: Kinango

Ward: Kinango

Project Activity: Construction of the ward administration office

FOLLOW UP ASSESSMENT



Assessment date

10th November 2016

Project Status

Not Implemented

Total funds awarded

Kshs. 9,976,823

Comments

The project implementation had not commenced at the time NTA assessed the project.

Total funds spent

Kshs. 0

The county government officials confirmed that due to delayed implementation the project funds were being re-allocated towards emergency in the supplementary budget for the relief kitty.

Outstanding Balance

Kshs. 9,976,823

Project Classification

Category G



Challenges

1. Reactive nature of information sharing
2. Lack of project GIS coordinates - (Kwale County have already established a County GIS coordination office and is already working with the National Government – The Ministry of Mining on the mapping process)
3. Lack of feedback platform to and from the members of the community as project beneficiaries (Kwale County is currently working on an SMS platform with Plan international on this)
4. Low capacity of some contractors which lead to delays in projects implementation

Recommendations

1. Proactive sharing and updating of the project implementation status report online
2. It is recommended that the counties undertake due diligence to ascertain the capabilities of counties to handle project implementation
3. Counties should adequately communicate to the members of the public on multiple year funded projects with projected time lines, - reallocated resources and those that are facing challenges in one way or another leading to the delay in project implementation

Lessons learnt

1. Kwale County have been supporting the local contractors capacity through linking them with financial institutions that even led to establishment of contractors' association at the county level
2. Robust M&E framework that has improved closer monitoring of project that even led to termination of two none performing contractors
3. Open door policy and willingness to learn – Kwale County is ready to learn through collaborative partnership and act on issues identified for action

Conclusion

This pilot assessment of county expenditures on infrastructure projects reveals significant successes as well as challenges in the management of public resources. NTA hopes that moving forward counties will adopt the recommendations to improve on project implementation for better outcomes towards better livelihoods for Kenyans.



HEAD OFFICE

National Taxpayers Association (NTA)

Diani Close, Off Ole Odume Road | Gate No. 7, House No. 5
P. O. Box 4037 - 00506, Nyayo Stadium, Nairobi, Kenya
Cell Phone: 254-701-946557 | 254-734-500940
Email: admin@nta.or.ke | Website: www.nta.or.ke

Nairobi Regional Office

Diani Close, Off Ole Odume Road
Gate No. 7, House No. 5
P.O. Box 4037 - 00506 Nairobi
Cell Phone: 254-701-946556
Email: nairobi@nta.or.ke

Central Regional Office

Nyeri Teachers Plaza, 1st Floor,
Room 10
P.O. Box 567 - 10100 Nyeri
Cell Phone: 254-701-946544
Email: central@nta.or.ke

Eastern Regional Office

Town Plaza, 3rd Floor, Ngei Road
P.O. Box 2046 - 90100 Machakos
Cell Phone: 254-701-946547
Email: eastern@nta.or.ke

Coast Regional Office

Kanderbhoy Building
Nkurumah Road, 1st Floor, Suite
14,
Opp Co-op Bank
P.O. Box 98860 Mombasa
Cell Phone: 254-701-946548
Email: coast@nta.or.ke

Rift Valley Regional Office

Meadows Hse, 1st Floor, Room
106
Opposite Sirikwa Hotel
P.O. Box 4956-301 00 Eldoret
Cell Phone: 254-701-946543
Email: riftvalley@nta.or.ke

North Eastern Regional Office

Diani Close, Off Ole Odume Road
Gate No. 7, House No. 5
P.O. Box 4037-00506 Nairobi
Cell Phone: 254-701-447448
Email: northeastern@nta.or.ke

Western Regional Office

Kakamoni Plaza, 1st Floor
Above Post Bank,
Canon Awori Street
Cell Phone: 254-701-946551
Email: western@nta.or.ke

Nyanza Regional Office

Nakumatt Mega City, Mezzanine
Floor
Nairobi Road
P.O. Box 204-40123 Kisumu
Cell Phone: 254-701-946550
Email: nyanza@nta.or.ke



National Taxpayers Association
pesa zetu, haki yetu

Supported by:



**german
cooperation**

DEUTSCHE ZUSAMMENARBEIT

giz Deutsche Gesellschaft
für Internationale
Zusammenarbeit (GIZ) GmbH



**MINISTRY FOR FOREIGN
AFFAIRS OF FINLAND**