



National Taxpayers Association
pesa zetu, haki yetu

KISUMU COUNTY

CITIZENS REPORT CARD

FINANCIAL YEAR 2014-15



TABLE OF CONTENTS

| | | |
|-----|---------------------------------------|------|
| 2.0 | Acknowledgement | i |
| 1.0 | Executive Summary | ii |
| 1.0 | About NTA | v |
| 2.0 | About the Project | v |
| 3.0 | Research Methodology | vi |
| 4.0 | NTA Project categorization | vii |
| 5.0 | County summaries | viii |
| 6.0 | Summary Findings | ix |
| | County Profile | x |
| | Project profiles and digital pictures | 1 |
| | Challenges | 61 |
| | Recommendations | 61 |
| | Lessons Learnt | 62 |
| | Conclusion | 62 |
| | Annex | 63 |



The findings expressed herein are those of the NTA and do not necessarily reflect the views of our partners.

© National Taxpayers Association
November, 2016

ACKNOWLEDGMENT

The National Taxpayers Association (NTA) wishes to acknowledge the contribution of various individuals who made this publication possible. This Pilot Follow Up County Citizen Report Card is a culmination of efforts from between Counties and the NTA for citizens to monitor revenue allocation and utilization to enhance transparency and accountability in the use of devolved public resources.

This citizen report card draws from the vast experience NTA has in carrying out social audits. We wish to acknowledge the following NTA Staff for their invaluable contribution; Michael Otieno, the Governance Advisor, Wolde Wesa, the National Coordinator, the Good Governance Project lead at NTA, Caroline Othim, with strategic and technical support from NTA regional coordinators namely Annah Katuki – Eastern, Deurence Onyango – Nyanza, Kennedy Elijah – Coast, Maryanne Mwangi – Central and Paul Odongo – Western who successfully piloted this project. Special thanks to the NTA ICT Officer, Thomas Mbuvi for his invaluable contribution to the compilation of the CRC.

Special thanks to the County Governments of Busia, Kisumu, Kitui, Kwale and Nyeri, the Office of the Auditor General, the Commission on Administration of Justice and Council of Governors for their support and collaborative efforts towards the development of the report.

Our sincere gratitude goes to GIZ and the Embassy of Finland for their generous financial support, which went a long way to make this publication a possibility.

EXECUTIVE SUMMARY

Corruption remains an inherent problem in utilization of revenue and public resources. This is in spite of official state led anti-corruption initiatives. Despite these reforms and efforts, corruption remains a fundamental problem. The public sector requires rethinking its approach to public finances oversight in the wake of questionable financial malpractices covering the entire spectrum in the public sector. If left alone the formal oversight institutions will not achieve much in the fight against corruption and wastage of taxpayers' money. There is therefore need for citizens to monitor resources allocated to projects at the sub national level.

The project sought to contribute to enhance social audit interventions through empowered citizens to fight corruption and abuse of power. The project particularly intended to ensure at the end of 2016, at least 40 percent of projects identified with issues through measures and action put in place-by the county government to enhance prudent utilisation of the resources. The Social Audit process allows citizens to effectively engage government in monitoring and to demand accountability, review the performance of their service providers and devolved fund managers, agree on their collective demands, and articulate their priorities to the duty bearers. The citizens' report card serves three important and interrelated purposes, that is; a source of information for citizens, a tool for citizens to hold leaders accountable, and documenting development process at the local level.

NTA commissioned a pilot initial assessment of 199 county projects (F/Y 2014/15) in 2015, across five counties selected purposively. These counties are : Kisumu - 40, Busia - 49, Nyeri - 33, Kwale - 41 and Kitui - 36 to monitor the use and management of public resources using Citizens Report Cards (CRCs). A number of activities were carried out culminating in the development of the initial five County Citizen Report Cards (CRCs). These were well sequenced project components and activities that included; development of data collection tool, partnership building with respective counties, training of community based data collectors, field based project assessment, constructive engagement with county officials, dissemination of the report both at the county and national level,

The follow-up is informed by the constructive engagement exercise where NTA and the County Government jointly co-created an action plan to address the issues identified for improvement.

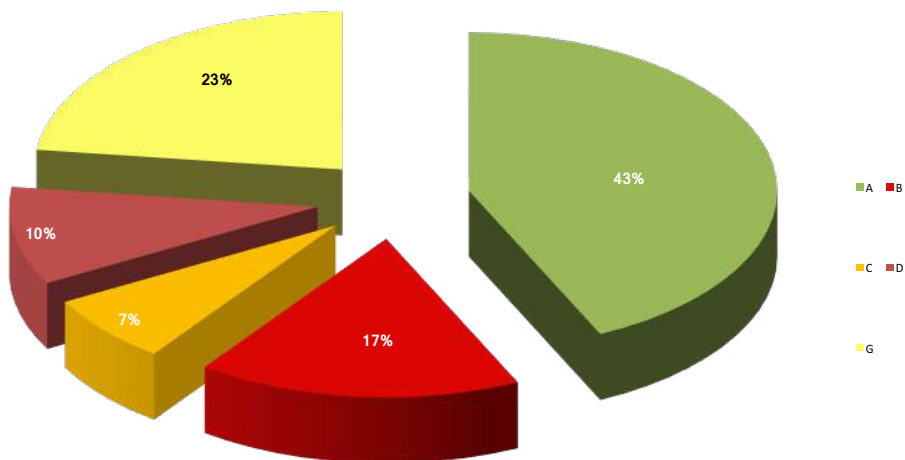
In this follow-up phase, NTA assessed 119 projects (Kisumu - 30, Busia - 34, Nyeri - 21, Kwale 16 and Kitui - 18.) Identified with issues for resolution from the initial assessment. These are projects which were either badly implemented, ongoing, abandoned, delayed or ghost projects. The average Fix Rate calculated for this follow-up phase is 55%.

$$\text{Fix Rate} = \frac{\text{Number of resolved problematic projects}}{\text{Number of problematic projects in the initial assessment}} \times 100$$

This report therefore highlights the progress achieved so far by counties in implementing the action plan commitments agreed upon during the initial phase constructive engagements, the lessons learnt thereof and suggestion on a number of general and counties specific recommendation with a view of continuously improving county level implementation and enhancing service delivery.

FIX RATE MATRIX

| CATEGORIES | PROJECTS | PERCENTAGE |
|--------------|-----------|-------------|
| A | 13 | 43% |
| B | 5 | 17% |
| C | 2 | 7% |
| D | 3 | 10% |
| G | 7 | 23% |
| TOTAL | 30 | 100% |



| | PROJECTS | PERCENTAGE |
|--|----------|------------|
| Total Projects in the initial phase | 40 | 100% |
| Total well implemented projects in initial phase | 10 | 25% |
| Total Projects with listed issues in initial phase | 30 | 75% |
| Fix Rate expected | 30 | 100% |
| Fix Rate realised | 15 | 50% |
| Fix Rate not realised | 15 | 50% |

1.0 About NTA

NTA is a national, independent, non-partisan organization focused on promoting good governance in Kenya Since 2006,

NTA has been implementing programmes focused on citizen demand for accountability through monitoring of the quality of public service delivery and the management of devolved funds.

It has achieved this through partnership building, citizen empowerment and development of social accountability tools (e.g. Citizen Report Cards and Community Scorecards).

NTA is fully independent of government; however, it is committed to working with the government to improve the quality of public service delivery and the management of devolved funds.

Vision: An accountable, citizen-responsive government delivering quality services to all.

Mission: To promote accountable, effective and efficient collection and utilization of public resources through citizen empowerment, enhancing public service delivery and partnership building.

2.0 About the Project

NTA with the support of GIZ and the Ministry of Foreign Affairs of Finland is implementing a project aimed at promoting good governance, transparency and accountability at the sub-national level through effective citizen participation, oversight in monitoring the management of devolved funds and problem solving.

The project location is Busia, Kisumu, Kitui, Nyeri, and Kwale counties. The project is aimed at achieving the following specific objectives; -

1. To establish partnerships with institutions at national and sub national for information sharing and redress mechanisms.
2. To enhance the capacity of citizens to effectively monitor the management of public funds.
3. To monitor implementation of public projects through development, production and dissemination of citizen report cards.

3.0 Methodology

1. Citizen empowerment (NTA staff and community monitors)
2. Communication to County Governments (Busia, Kisumu, Kitui, Nyeri, and Kwale counties) and oversight institutions e.g. the EACC, Office of the Auditor General and Commission on Administrative Justice (Ombudsman)
3. Follow up site visit to selected projects (problematic and category C projects) funded in FY 2014/15 across sectors e.g. health, education, water and sanitation etc.
4. Interview users (using Development Check app and beneficiary questionnaires)
5. Take digital photos.
6. Technical assessment and classification of the projects by an independent Engineer/Quantity Surveyor
7. Constructive engagement meetings with County Governments for comments on draft CRC reports and commitments to address recommendations.
8. Revisiting of contentious projects.
9. Development of final CRCs
10. Dissemination of CRC reports

4.0 Nta project categorization

| | |
|---|--|
| <p>Category A Projects Well implemented, completed projects</p> | <p>This category is for projects that scored above 50% by the engineer during the technical assessment and were found to be well built; with good value for money (i.e. The budget spent is commensurate to the project delivered).</p> |
| <p>Category B Projects Badly implemented, complete and incomplete projects</p> | <p>This category is for projects, which had scored less than 50% on the Technical Assessment Form, and were poorly constructed with no commensurate value for money, and/or with budgets much larger than what is actually delivered.</p> |
| <p>Category C Projects Well-implemented, incomplete projects</p> | <p>This category is for projects, which had scored above 50% on the Technical Assessment Form, and the projects were well implemented but on-going, i.e. Money had been used to build a structure of good quality, but the construction is incomplete.</p> |
| <p>Category D Projects Abandoned Projects</p> | <p>This category is for incomplete projects and which have not consistently been receiving financial allocation for the continuation of project implementation.</p> |

| | |
|---|---|
| Category E Projects Ghost projects | <p>This category is for projects, which had been officially, allocated funds but the project did not physically exist at the time of study and money was proven spent i.e. It is a ghost project.</p> |
| Category F Projects Reallocated Funds | <p>This category is for projects that were not implemented for the reason that the funds were reallocated to other projects.</p> |
| Category G Projects Delayed implementation | <p>The project is officially allocated funds but the implementation has not started and funds are in still in the Account.</p> |

Follow Up Summary findings from the Audit of the County projects

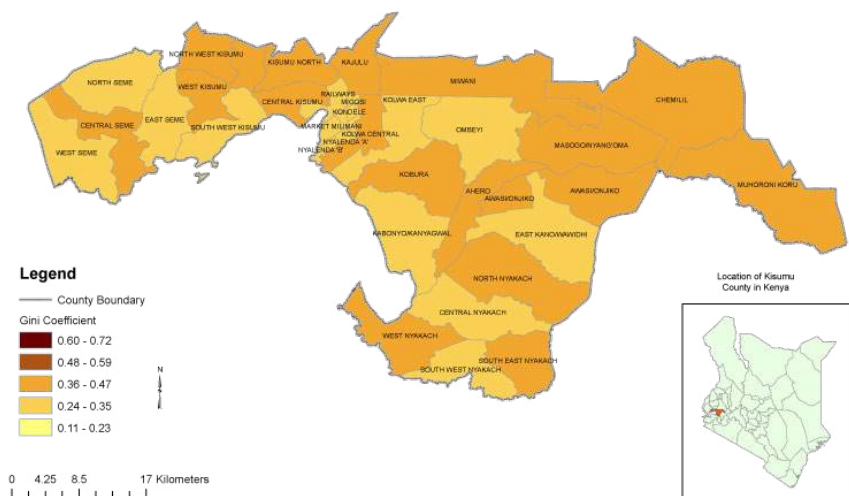
| Project Assessment Classification | No. Of Projects | Budget Awarded [KSHS] | Budget Spent [KSHS] | Outstanding Balance [KSHS] |
|---|-----------------|-----------------------|---------------------|----------------------------|
| Well Implemented Projects | 13 | 40,099,625.20 | 27,171,291.35 | 12,958,335.85 |
| Badly implemented, complete and incomplete projects | 5 | 13,321,482.00 | 11,406,224.00 | 1,915,257.00 |
| Well implemented, ongoing projects | 2 | 8,392,597.00 | 4,868,902.00 | 3,523,695.00 |
| Abandoned Projects | 3 | 13,558,349.00 | 8,134,868.00 | 5,423,481.00 |
| Delayed Projects | 7 | 20,005,085.00 | 14,358,767.00 | 5,646,318.00 |
| | | | | |
| Total | 30 | 95,377,138.20 | 65,940,052.35 | 29,437,085.85 |

Kisumu County Profile

The County is bordered by Homa Bay County to the South, Nandi County to the North East, Kericho County to the East, Vihiga County to the North West and Siaya County to the West and lake victoria. The County covers a total land area of 2009.5 Km² and another 567 Km² covered by water. Kisumu County has seven constituencies namely Kisumu West, Kisumu Central, Kisumu East, Seme, Muhoroni, Nyando and Nyakach.

The population of the county according to the 2009 Population and Housing Census is 968,909 persons with 474,687 males and 494,222 females. The population of children is at 533,875. This is 55.1 percent of the population. The poverty rate in Kisumu is 47.8 percent against the national average of 47.2 percent of the population living below the poverty line.

The County's major economic activity is fishing and agriculture e.g. rice and sugarcane as well as light industries. The County is also a major tourist destination with its unique features such as the second largest fresh water lake (Lake Victoria), Kit Mikayi, Ndere Island National Park, and Impala Park, among others.



Project Name: St. Marks Lela (Rainbow) Dispensary

Sub County: Kisumu West

Ward: Central

Project Activity: Construction of Maternity Block

INITIAL ASSESSMENT



Assessment date
8th September 2015

Total funds awarded
3,684,693.60

Total funds spent
3,316,031.00

Outstanding Balance
368,662.60

Project Classification
Category C



Project Status
Ongoing and not in use

NTA Findings

Good quality materials were used; graded ballast, clean middle grained sand and concrete blocks. At the time of assessment, the work lintel level and left exposed to harsh environment. The workmanship was however good; there were no defects, blocks were properly laid and ring beam well vibrated. The BQs was not available for comparison.



Project Name: St. Marks Lela (Rainbow) Dispensary

Sub County: Kisumu West

Ward: Central

Project Activity: Construction of Maternity Block

FOLLOW UP ASSESSMENT



Assessment date
7th November 2016

Total funds awarded
3,967,142.00

Total funds spent
1,720,936.00

Outstanding Balance
2,246,206.00

Project Classification
Category A



Project Status
Complete and not in use

NTA Findings
The project exhibited good workmanship with quality finishes done. Plumbing works and construction of septic tank underway. Safety standards have been adhered to although there was no placenta pit on site as yet. There were no documents like BQ, plans and contract at the project site for comparison



County Government Response

Chief Officer Health to provide scope of works and site plan to the facility for reference.

Project Name: Arito Langi Dispensary

Sub County: Seme

Ward: West Seme

Project Activity: Construction of staff house (completion)

INITIAL ASSESSMENT



Assessment date
7th September 2015



Project Status
Complete and not in use

Total funds awarded
123,456.00

Total funds spent
103,851.00

Outstanding Balance
19,605

Project Classification
Category C

NTA Findings

The project entailed foundation, walling, roofing, plastering, ceiling, painting, fittings, roof catchment and construction of a 2-door external toilet. The project is complete but not in use as medical personnel had not been posted to the facility at the time of assessment.



Project Name: Arito Langi Dispensary

Sub County: Seme

Ward: West Seme

Project Activity: Construction of staff house (completion)

FOLLOW UP ASSESSMENT



Assessment date
9th November 2016

Total funds awarded
123,456.00

Total funds spent
103,851.00

Outstanding Balance
19,605

Project Classification
Category A

Project Status
Complete and in use



NTA Findings

The project was inherited by the county government from LATF at ring beam level. It was complete and occupied by a staff member during the follow-up assessment. However, there was a major crack in the partition that needed immediate renovation. A septic tank had not been done instead a one door external toilet was done. There is storm water from the road flooding the dispensary's compound during rainy season, posing a danger to existing buildings

County Government Response

Drainage issue noted by Roads Dept. However there is no budgetary allocation currently. The crack to be renovated by February 2017 as in the annexed status letter

Project Name: Kochieng Dispensary

Sub County: Nyando

Ward: Kobura

Project Activity: Construction of dispensary block

INITIAL ASSESSMENT



Assessment date

16th September 2015

Total funds awarded

7,726,972.00

Total funds spent

1,738,588.00

Outstanding Balance

5,988,384.00

Project Classification

Category C

Project Status

Incomplete and not in use

NTA Findings

A well implemented project although it was taking too long to complete; construction of the project started in July 2014 and progressed well but stalled at the ring beam level for six months before resuming. The workmanship was good and the project was within the budget. The materials are of standard quality, doors and windows are of standard sizes as well except there are no permanent vents visible.



Project Name: Kochieng Dispensary

Sub County: Nyando

Ward: Kobura

Project Activity: Construction of dispensary block

FOLLOW UP ASSESSMENT



Assessment date
8th November 2016

Total funds awarded
7,726,972.00

Total funds spent
1,738,588.00

Outstanding Balance
5,988,384.00

Project Classification
Category A



Project Status
Complete and in use

NTA Findings

This is a well implemented project. The civil works are of good quality with good quality materials. Safety standards were well adhered to. However, the facility needs more staff, an access road, running water and electricity. There were no BQ/plans/contract for comparison

County Government Response

The Roads department to prioritize the access road in next FY. The water and electricity will also be prioritized by the respective departments. See annexed a status letter on the project



Project Name: Oren Dispensary

Sub County: Nyando

Ward: Awasi Onjiko

Project Activity: Construction of dispensary block

INITIAL ASSESSMENT



Assessment date
15th September 2015



Project Status
Incomplete and not in use

Total funds awarded
1,643,815.00

Total funds spent
1,643,815.00

Outstanding Balance
Nil

Project Classification
Category C

NTA Findings

At the time of assessment, the project is well implemented except the materials used were disintegrating due to exposure to harsh weather. The window and door sizes were up to the required standard even though vents were yet to be fitted.



Project Name: Oren Dispensary

Sub County: Nyando

Ward: Awasi Onjiko

Project Activity: Construction of dispensary block

FOLLOW UP ASSESSMENT



Assessment date
8th November 2016



Project Status
Complete and in use

Total funds awarded
1,643,815.00

Total funds spent
1,643,815.00

Outstanding Balance
Nil

Project Classification
Category A

NTA Findings

The project, operationalized in April 2016 was well executed with fair quality of materials. Safety and project specifications like ceiling heights, doors and windows were up to standard. The facility requires more staff, an access road and a secured fence, running water and a staff house to provide optimal health services to the community

County Government Response

The county not in a position to employ more staff at the moment. The Dept of Water to follow up on the borehole and establish whether it can be piped to the facility. The access road to be given priority by the Roads Dept. See status letters annexed



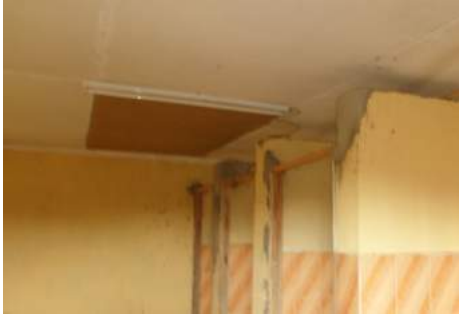
Project Name: Ahero Market Abolition Block

Sub County: Nyando

Ward: Ahero

Project Activity: Construction of abolition block within Ahero Market

INITIAL ASSESSMENT



Assessment date

14th September 2015

Project Status

Incomplete and not in use

Total funds awarded

1,956,827.00

Total funds spent

1,899,929.80

Outstanding Balance

56,898.20

Project Classification

Category C

NTA Findings

The project was ongoing and not in use as there was no septic tank. The quality of workmanship was poor as there were visible cracks on the walls. The quality of materials were fair and the project specifications like doors, ceiling heights and vents meet the required standard. The Chief Officer Trade reported that the abolition block would be connected to the main market sewer line.



Project Name: Ahero Market Abolition Block

Sub County: Nyando

Ward: Ahero

Project Activity: Construction of abolition block within Ahero Market

FOLLOW UP ASSESSMENT



Assessment date
8th November 2016

Total funds awarded
1,956,827.00

Total funds spent
1,899,929.00

Outstanding Balance
56,898.20

Project Classification
Category A



Project Status
Complete and in use

NTA Findings

The project was fairly well implemented with fair quality materials. The external paint had started peeling off and cracks are visible on the superstructure. There is intermittent water supply at the abolition block that has no signage. There were no Bq/contract/plan for comparison

County Government Response

The low lying areas of Nyando have saline sand causing facial cracks and moulding. The paint is peeling off as a result of this. The County has advised all contractors in these areas to use quarry dust instead of the saline sand.



Project Name: Bunde Dispensary

Sub County: Nyando

Ward: Ahero

Project Activity: Construction of maternity block

INITIAL ASSESSMENT



Assessment date

15th September 2015

Total funds awarded

2,491,854.00

Total funds spent

1,775,786.00

Outstanding Balance

716,068.00

Project Classification

Category C

Project Status

Incomplete and not in use

NTA findings

The project's implementation pace was very slow. The workmanship was poor as sections of the walls were not plumb and the ring beam not well vibrated. Some of the materials used like machine cut stones were susceptible to disintegration from harsh weather. The work was within the estimated cost.

County Government

Response

The Chief Officer Health reported that the male ward at Bunde had been completed, plastered and tiled. The contractor had been paid the contract sum less 10% retention fee. NTA revisited the project on 23rd February 2016 to ascertain this information



Project Name: Bunde Dispensary

Sub County: Nyando

Ward: Ahero

Project Activity: Construction of maternity block

FOLLOW UP ASSESSMENT



Assessment date
7th September 2015

Total funds awarded
2,500,000.00

Total funds spent
1,598,206.35

Outstanding Balance
901,793.65

Project Classification
Category A



Project Status
Complete and not in use

NTA findings

The project is complete, pending plumbing works and works in the washing area. The room sizes, doors, windows and ceiling heights were to standard except the ward was not partitioned. The paint is peeling off already yet the project has not been handed over

County Government Response

The low lying areas of Nyando have saline sand causing facial cracks and moulding. The County has advised all contractors implementing projects in these areas to use quarry dust instead of the saline sand. See annexed status letter on the project



Project Name: Sangorota Dispensary

Sub County: Nyakach

Ward: West Nyakach

Project Activity: Construction of Dispensary Block

INITIAL ASSESSMENT



Assessment date

10th September 2015

Total funds awarded

3,500,000.00

Total funds spent

Nil

Outstanding Balance

3,500,000.00

Project Classification

Category H

Project Status

Incomplete and not in use



NTA findings

The works so far exhibited good workmanship with good quality materials. There was adequate provision for doors, windows and ceiling heights were to standard. Safety standards have been adhered to, however the project was abandoned at the wall plate level leaving it exposed to deterioration. There is adequate evidence that the project has stalled for a long time. More can be done to achieve value for money. The works should be accelerated to ensure completion.

County Government's Response

The Chief Officer Health committed that the project will be completed in 2015/16 FY.

Project Name: Sangorota Dispensary

Sub County: Nyakach

Ward: West Nyakach

Project Activity: Construction of Dispensary Block

FOLLOW UP ASSESSMENT



Assessment date
4th November 2016

Total funds awarded
3,500,000.00

Total funds spent
Nil

Outstanding Balance
3,500,000.00

Project Classification
Category A



Project Status
Complete and not in use

NTA Findings

The project was well implemented with good choice of materials. The project specifications were up to standard with adequate safety provisions. However the facility was not in use due to lack of beds

County Government's Response

The purchasing of beds will be prioritized in the subsequent financial years

Project Name: Rae Dispensary

Sub County: Nyakach

Ward: North Nyakach

Project Activity: Construction of Maternity Wing

INITIAL ASSESSMENT



Assessment date

11th September 2015

Total funds awarded

3,961,968.00

Total funds spent

3,658,253.00

Outstanding Balance

303, 715.00

Project Classification

Category D

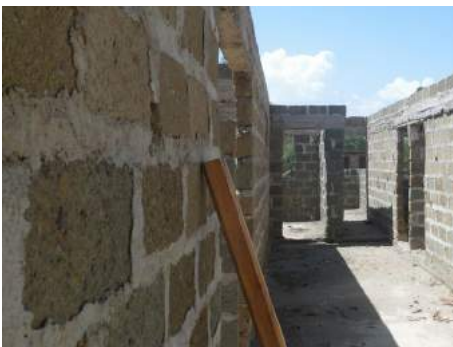


Project Status

Incomplete and not in use

NTA findings

The project stalled at the ring beam level and the walling material is wearing out due to over-exposure to extreme weather conditions. There was urgent need to complete this project to avoid losses occasioned by continued deterioration. However, project specifications were standard and exhibited good workmanship.



County Government's Response

The Director M&E reported that this project was awarded to another contractor on 1st February 2016 and the county was keen on fast tracking its implementation as supported by the budget.

Project Name: Rae Dispensary

Sub County: Nyakach

Ward: North Nyakach

Project Activity: Construction of Maternity Wing

FOLLOW UP ASSESSMENT



Assessment date
3rd November 2016

Total funds awarded
3,961,968.00

Total funds spent
3,658,253.00

Outstanding Balance
303, 715.00

Project Classification
Category A



Project Status
Incomplete and not in use

NTA Findings

The project exhibited good workmanship with good choice of materials except the window grills.. The project is complete and currently not in use awaiting handing over and official opening. The sewer line was directed in a wrong place and needs re-channelling

County Government's Response

The septic to be re-channelled to a more suitable location immediately so that the facility can be handed over and utilized.



Project Name: Koru Youth Polytechnic

Sub County: Muhoroni

Ward: Muhoroni Koru

Project Activity: Construction of two classrooms and a workshop

INITIAL ASSESSMENT



Assessment date
2nd September 2015

Total funds awarded
4,999,304.00

Total funds spent
Nil

Outstanding Balance
4,999,304.00

Project Classification
Category H

County Government's Response

The Director M&E reported that the project has since progressed to roofing stage (80% complete). Total funds awarded at present is 5M. Initially stakeholders wanted a storey complex. However, this was not feasible, instead a workshop and 2 classrooms were done to completion

Project Status
Incomplete and not in use

NTA findings
During the first visit, there were no works/materials on the site. On the second visit on 23rd February 2016, the works had progressed to completion

Project Name: Koru Youth Polytechnic

Sub County: Muhoroni

Ward: Muhoroni Koru

Project Activity: Construction of two classrooms and a workshop

FOLLOW UP ASSESSMENT



Assessment date
10th November 2016

Total funds awarded
4,999,304.00

Total funds spent
4,032,908.00

Outstanding Balance
996,396.00

Project Classification
Category A



Project Status
Complete and not in use

NTA Findings

This was a well implemented project with good choice of materials and adequate safety provisions. The workmanship was good and finishes done well. However the project has not been handed over by the contractor

County Government's Response

The Institution's Manager and Administration had some suggestions to be included in the building but could not be accommodated by the BQ. These issues have since been resolved and the new block is ready for handing over.



Project Name: Pap Onditi Solar Works

Sub County: Nyakach

Ward: Central Nyakach

Project Activity: Solar security light installation

INITIAL ASSESSMENT



Assessment date
11th September, 2015

Total funds awarded
2,614,340.00

Total funds spent
2,614,340.00

Outstanding Balance
Nil

Project Classification
Category E



Project Status
Does not exist

NTA findings
During the first visit, there were no works/materials on the site.

County Government's Response
The Chief Officer, Energy reported that the project was complete. The lights were ordered from China as per the quality specified by the County Engineer

Project Name: Pap Onditi Solar Works

Sub County: Nyakach

Ward: Central Nyakach

Project Activity: Solar security light installation

FOLLOW UP ASSESSMENT



Assessment date
3rd November 2016

Total funds awarded
2,614,340.00

Total funds spent
2,614,340.00

Outstanding Balance
Nil

Project Classification
Category A



Project Status
Complete and in use

NTA Findings
The project was completed well. However, some lights do not light and need repair and maintenance

County Government's Response
The Chief Officer, Green Energy reported that the faulty lights are those done by CDF and not county government. See annexed letter on the status of the project



Project Name: Nyangoma Community Hall

Sub County: Muhoroni

Ward: Nyangoma Masogo

Project Activity: Construction of Community Hall

INITIAL ASSESSMENT



Assessment date

3rd September, 2015

Total funds awarded

5,000,000.00

Total funds spent

5,000,000.00

Outstanding Balance

Nil

Project Classification

Category H



Project Status

Incomplete and not in use

NTA findings

During the first monitoring visit, only excavation work had been done. NTA revisited the project on 23rd February and works had progressed to roofing stage.

County Government's Response

The Director M&E observed that works on this project have since progressed to 80% i.e. Roofing stage after NTA's first visit to the project. He committed to expedite the works to completion.

Project Name: Nyangoma Community Hall

Sub County: Muhoroni

Ward: Nyangoma Masogo

Project Activity: Construction of Community Hall

FOLLOW UP ASSESSMENT



Assessment date
4th November 2016

Total funds awarded
5,000,000.00

Total funds spent
5,000,000.00

Outstanding Balance
Nil

Project Classification
Category A



Project Status
Complete and in use

NTA Findings

The project was well implemented with good quality materials. Project specifications were to required standards with adequate provision for safety. The project was in use at the time of assessment though official handing over by contractor had not been done

County Government's Response

The Chief Officer Gender and Culture committed that the project will be handed over to the community in the month of December 2016



Project Name: Miwani Dispensary

Sub County: Muhoroni

Ward: Miwani

Project Activity: Construction of maternity Block

INITIAL ASSESSMENT



Assessment date

3rd September 2015

Total funds awarded

7,446,974.00

Total funds spent

5,243,586.00

Outstanding Balance

2,203,388.00

Project Classification

Category A



Project Status

Complete and not in use

NTA findings

The project was well implemented; good quality materials were used, safety standards were well adhered to; exits are opening outside. There were provisions for enough ventilation and there was no exposure to harsh weather. The project was constructed in poor soil structure hence the cost is justified. No placenta pit



Project Name: Miwani Dispensary

Sub County: Muhoroni

Ward: Miwani

Project Activity: Construction of Maternity Block

FOLLOW UP ASSESSMENT



Assessment date
10th November 2016

Total funds awarded
7,446,974.00

Total funds spent
5,243,586.00

Outstanding Balance
2,203,388.00

Project Classification
Category A



Project Status
Complete and in use

NTA Findings

The project is well completed. Good quality materials were used, except on the roof with provisions for standard project specifications. Sections of the ceiling had not been fitted and the septic tank is dysfunctional and the toilet has a major crack. Placenta pit under construction.

County Government's Response

See annexed letter with detailed response from the Chief Officer, Health on the status of the project and expected completion date



Project Name: Milenye Dispensary

Sub County: Muhoroni

Ward: Miwani

Project Activity: Construction of Doctor's Residence

INITIAL ASSESSMENT



Assessment date

4th September 2015

Total funds awarded

2,400,000.00

Total funds spent

Nil

Outstanding Balance

2,400,000.00

Project Classification

Category H



Project Status

Incomplete and not in use

NTA findings

Good quality materials were used;waling was done using concrete and columns were well done. There was sufficient provision for ventilation,However,the project stalled at the ring beam level at the time of assessment.

County Government's Response

The facility has been given priority for water connection as well, besides the access road.

Project Name: Milenye Dispensary

Sub County: Muhoroni

Ward: Nyangoma Masogo

Project Activity: Construction of Doctor's Residence

FOLLOW UP ASSESSMENT



Assessment date
10th November 2016

Total funds awarded
2,420,499.00

Total funds spent
1,130,304.00

Outstanding Balance
1,290,195.00

Project Classification
Category A



Project Status
Complete and not in use

NTA Findings

This was a well implemented project with good choice of materials and adequate safety provisions. The workmanship was good and finishes done well. However there were exposed pipes around the building that needed back filling

County Government's Response

The doctor's residence is ready for occupation. The exposed pipes will be backfilled before the contractor exits the site.



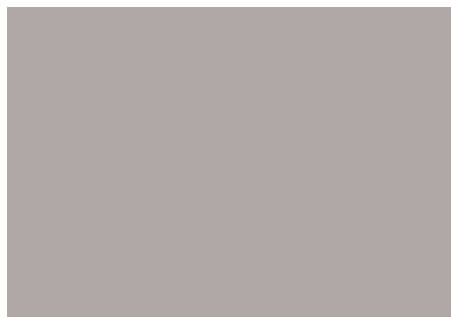
Project Name: Dago Thim Urudi Water Project

Sub County: Kisumu West

Ward: North Kisumu

Project Activity: Repair and Erection of Elevated Steel Tanks

INITIAL ASSESSMENT



Assessment date

11th September, 2015

Total funds awarded

1,490,600.00

Total funds spent

Nil

Outstanding Balance

1,490,600.00

Project Classification

Category E



Project Status

Does not exist

NTA findings

During the first visit, there were no works/materials on the site.

County Government's Response

The Chief Officer, Water reported that the scope of works entailed the repair of 10m³ steel tank, elevated 9m high. Works at the site Were 60% complete as at 20th January 2016

Project Name: Dago Thim Urudi Water Project

Sub County: Kisumu West

Ward: North Kisumu

Project Activity: Repair and Erection of Elevated Steel Tanks

FOLLOW UP ASSESSMENT



Assessment date

10th November 2016

Total funds awarded

1,490,600.00

Total funds spent

815,000.00

Outstanding Balance

675,600.00

Project Classification

Category B



Project Status

Complete and not in use

NTA Findings

The repair of the tank was not well done. Residents still do not have access to piped water

County Government's Response

The residents do not have water due a capacity problem with the pump set at Nyahera. The pump is not able to pump enough water to reach the tank height, necessitating the renovation of the pump set. A payment request of balance has been received but not paid out to the contractor. See annexed a status letter

Project Name: Rotary Vocational Training Centre

Sub County: Kisumu Central

Ward: Market Milimani

Project Activity: Construction of Boundary Wall

INITIAL ASSESSMENT



Assessment date

10th September, 2015



Project Status

Does not Exist

Total funds awarded

2,000,000.00

Total funds spent

Nil

NTA Findings

The initially assessed project was Kusa Youth Polytechnic. There were no works on site at the time of assessment.

Outstanding Balance

2,000,000.00

Project Classification

Category E

County Government Response

The Chief Officer, Department of Education, reported the KES 2,000,000.00 meant for the establishment of a polytechnic at Kusa was re-allocated to the construction of a boundary wall at Rotary to curb insecurity caused by the invasion of street children to the institution. There was no need developing a new Youth Polytechnic at Kusa yet a nearby Youth Polytechnic (Alara) did not have students. Was no justification to undertake a new project yet an existing one had no students. (Alara) did not have student

Project Name: Rotary Vocational Training Centre

Sub County: Kisumu Central

Ward: Market Milimani

Project Activity: Construction of Boundary Wall

FOLLOW UP ASSESSMENT



Assessment date
3rd November 2016



Project Status
Incomplete and not in use

Total funds awarded
4,980,766.00

Total funds spent
4,980,766.00

Outstanding Balance
Nil

Project Classification
Category B

NTA Findings

The quality of materials used were good, though the project exhibited poor workmanship as sections of the wall are already falling. The jointing was poorly done, the height is low and street children jump and invade the institution. Besides only a section of the institution is fenced. The contractor has been out of site for more than six months and the wall remains exposed to harsh weather

County Government Response

See annexed a status letter by the Chief Officer ECDE and Youth Polytechnics on the status of the project



Project Name: Sangoro Hydropower-Ombugu Rd

Sub County: Nyakach

Ward: West Nyakach

Project Activity: Opening of a new road

INITIAL ASSESSMENT



Assessment date

11th September 2015

Total funds awarded

7,656,453.00

Total funds spent

4,562,280.00

Outstanding Balance

3,094,173.00

Project Classification

Category B



Project Status

Incomplete and not in use

NTA findings

The road was opened over a steep and winding landscape but not graded and totally un-motorable. The road is too steep making it dangerous to road users. The road drainage is not executed thus the road is wasting away due to soil erosion. The quality of workmanship is poor and works should be accelerated to ensure completion.

County Government's Response

The Director M&E committed to see to it that the steepness of the road and drainage works were corrected to make it safe for road users.

Project Name: Sangoro Hydropower-Ombugu Rd

Sub County: Nyakach

Ward: West Nyakach

Project Activity: Opening of a new road

FOLLOW UP ASSESSMENT



Assessment date

4th November 2016

Total funds awarded

7,656,453.00

Total funds spent

4,562,280.00

Outstanding Balance

3,094,173.00

Project Classification

Category B



Project Status

Incomplete and not in use

NTA Findings

The road was opened over a steep and winding landscape. It is too steep making it dangerous to road users. The road drainage is not executed thus the road is wasting away due to soil erosion. The quality of workmanship is poor and the road is impassible

County Government's Response

The first contractor was terminated and the retendering will take time before the new contractor is identified and deployed on site. The project has adequate budgetary allocation following an allocation of additional Kshs. 4 million for improvement. See annexed letter on the status of the project

Project Name: Kinasia Dispensary

Sub County: Nyando

Ward: East Kano/Wawidhi

Project Activity: Renovation and Fencing of the Dispensary

INITIAL ASSESSMENT



Assessment date
15th September 2015

Total funds awarded
2,600,000.00

Total funds spent
2,338,247.00

Outstanding Balance
261,753

Project Classification
Category B



Project Status
Incomplete and in use

NTA findings

The proposed renovation work was not done properly and exhaustively as envisaged. Overall, The workmanship was poor as the tiles were not well grouted, the paint work and fittings were not done satisfactorily. The quality of materials used was also poor as the fitted doors were warping

County Government's Response

The Director, M&E reported that renovation work was on going at the time of assessment; grouting was yet to be done as the laid tiles had to dry up. The warping was due to poor foundation. He committed to have the warping door redone and the shifting gate refitted by 30th April 2016 .



Project Name: Kinasia Dispensary

Sub County: Nyando

Ward: East Kano/Wawidhi

Project Activity: Renovation and Fencing of the Dispensary

FOLLOW UP ASSESSMENT



Assessment date
8th November 2016



Project Status
Complete and in use

Total funds awarded
2,600,000.00

Total funds spent
2,125,923.00

Outstanding Balance
474,077.00

Project Classification
Category B

NTA Findings

The renovation work was poorly done. The external paintwork peeling off. The roof was not replaced as specified in the scope. The gutters were not replaced, old one poorly repaired. The sewer line is dysfunctional. Mass concreting of the fence was not done and the gate is still shifting

County Government's Response

The contractor to make good the defects as the defects liability has not yet lapsed. Renovation works were scaled down following a cut in the budget. See annexed a status letter from the Project Manager



Project Name: Miranga Dispensary

Sub County: Muhoroni

Ward: Miwani

Project Activity: Renovation works

INITIAL ASSESSMENT



Assessment date
3rd September 2015

Total funds awarded
2,106,183.00

Total funds spent
1,155,783.00

Outstanding Balance
950,400.00

Project Classification
Category B

Project Status
Incomplete and in use



NTA findings

Good quality ballast was used although the walling was not properly bonded with the initial work which implies poor workmanship. The allocated funds was enough to complete the project including painting which was still pending at the time of assessment.

County Government's Response

The contractor was paid for works done as per the scope less retention fee. The contractor started the work late as the road to the facility had to be repaired first, thus the delay in implementation. The contractor did extra works (a toilet and removal of top vegetative soil from the site) which were not in the scope of works

Project Name: Miranga Dispensary

Sub County: Muhoroni

Ward: Miwani

Project Activity: Renovation works

FOLLOW UP ASSESSMENT



Assessment date
10th November 2016

Total funds awarded
2,106,183.00

Total funds spent
1,155,783.00

Outstanding Balance
950,400.00

Project Classification
Category B



Project Status
Complete and in use

NTA Findings

The pending paint work was completed. Overall, the workmanship was poor. Section of the fascia board hanging. The roof seemed to be leaking still as the ceiling board is stained. The walling was not properly bonded with the initial work, thus sever cracks on the wall.

The access road is in bad shape

County Government's Response

The Dept of Roads to prioritize the access road to the facility for immediate repair. See annexed status letter.

Project Name: Nyahera Community Hall

Sub County: Kisumu West

Ward: North Kisumu

Project Activity: Construction of a Community Hall

INITIAL ASSESSMENT



Assessment date
8th September 2015

Total funds awarded
1,979,192.00

Total funds spent
1,979,192.00

Outstanding Balance
Nil

Project Classification
Category B

Project Status
Incomplete and not in use



NTA Findings

At the time of assessment, the foundation, walling, suspended slab and ring beam had been completed. Badly implemented project so far, poor quality quarry stones were used. Walling not done well, columns and beams were not well erected. The work done was also not within the estimated cost and time thus no value for money.

County Government Response

A LASDAP project whose contract was terminated and demolished following a decision by the County M&E team due to non-conformance to specifications poor workmanship. The contract awarded to a new contractor and works are at slab level now the foundation is underway

Project Name: Nyahera Community Hall

Sub County: Kisumu West

Ward: North Kisumu

Project Activity: Construction of a Community Hall

FOLLOW UP ASSESSMENT



Assessment date

7th November 2016

Project Status

Incomplete and not in use

Total funds awarded

1,999,840.00

Total funds spent

1,999,260.00

Outstanding Balance

580.00

Project Classification

Category C

NTA Findings

The badly implemented project was demolished. The new structure exhibited good workmanship with good choice of materials. The walls are plumb with well vibrated columns. There is adequate provision for doors, windows, vents and stair cases. The works done so far exhibit value for money. However, the contractor was not on site and there were no BQ/plan for comparison

County Government Response

According to the scope of works, the contractor was to reach the window level. However an additional 5M has been allocated the project in 2016/17 for its completion. See annexed status letter



Project Name: Lumumba Health Centre

Sub County: Kisumu Central

Ward: Market Milimani

Project Activity: Construction of a 32-bed general ward

INITIAL ASSESSMENT



Assessment date

19th September 2015

Total funds awarded

6,392,597.00

Total funds spent

Nil

Outstanding Balance

6,392,597.00

Project Classification

Category C



Project Status

Incomplete and not in use

NTA Findings

A well implemented project; Materials used i.e concrete blocks, iron sheets and reinforcement bars were of good quality. BQ and project plans not available thus NTA not able to ascertain whether the scope of work undertaken was within the stipulated time and commensurate to budgetary provisions.



Project Name: Lumumba Health Centre

Sub County: Kisumu Central

Ward: Market Milimani

Project Activity: Construction of 32-bed general ward

FOLLOW UP ASSESSMENT



Assessment date
3rd November 2016

Total funds awarded
6,392,597.00

Total funds spent
4,868,902.00

Outstanding Balance
1,523,695.00

Project Classification
Category C



Project Status
Incomplete and not in use

NTA Findings

The project is seriously behind schedule. The contractor has once been terminated and the building underwent an integrity test pointing to poor workmanship. However the contractor was reinstated but the pace of implementation has been very slow. BQ and plan not available. Project should be expedited to enhance value for money and serve the eager clients

County Government Response

See annexed a status letter on the project by the Chief Officer Health



Project Name: Kianja Youth Polytechnic

Sub County: Kisumu East

Ward: Kajulu

Project Activity: Construction of Two Classrooms and a Latrine

INITIAL ASSESSMENT



Assessment date
17th September 2015

Total funds awarded
4,000,000.00

Total funds spent
Nil

Outstanding Balance
4,000,000.00

Project Classification
Category H

Project Status
Incomplete and not in use



NTA Findings

The project was well founded with good quality walling and column materials but abandoned at a critical stage thus susceptible to deterioration. The project is seriously behind schedule despite sufficient budgetary allocation.

County Government Response

The Chief Officer, ECDE and Youth Polytechnics reported that standards for building classrooms for Youth Polytechnics were not adhered to during design (the classrooms were too narrow) thus the project was earmarked for demolition pending a report from the County Engineer on structural components. Though the project status implementation list provided by the

Project Name: Kianja Youth Polytechnic

Sub County: Kisumu East

Ward: Kajulu

Project Activity: Construction of two classrooms and a latrine

FOLLOW UP ASSESSMENT



Assessment date
7th November 2016

Total funds awarded
4,000,000.00

Total funds spent
Nil

Outstanding Balance
4,000,000.00

Project Classification
Category D



Project Status
Incomplete and not in use

NTA Findings

Good quality materials used , however the project has stalled for over one year and remains exposed to harsh weather. The toilet is still at the slab level one year later. The building has neither been demolished as indicated by the CO-Education neither has the newly identified contractor started works on site. Works should be expedited to ensure value for money.

County Government Response

The first contractor was terminated and a new one identified. The new one has undertaken to complete the project by 31st December 2016 as per the annexed letter.

Project Name: Lunga Youth Polytechnic

Sub County: Seme

Ward: East Seme

Project Activity: Construction of Multi-purpose Hall

INITIAL ASSESSMENT



Assessment date
7th September 2015



Project Status
Incomplete and not in use

Total funds awarded
6,000,000.00

Total funds spent
Nil

Outstanding Balance
6,000,000.00

Project Classification
Category H

NTA Findings

The project was well implemented; good quality concrete blocks were used, reinforcement was properly done,adequate ventilation was provided although the implementation process was slow. The project is wide in scope and seems be have been under estimated.



Project Name: Lunga Youth Polytechnic

Sub County: Seme

Ward: West Seme

Project Activity: Construction of Multi-purpose Hall

FOLLOW UP ASSESSMENT



Assessment date
9th November 2016

Total funds awarded
6,000,000.00

Total funds spent
6,000,000.00

Outstanding Balance
Nil

Project Classification
Category D

Project Status
Incomplete and not in use
NTA Findings

The project has taken too long to



complete. The gables have collapsed due to over-exposure to harsh weather. The contract was varied to cater for steel in the roof instead of wood due to the large scope but this is yet to be approved by the county Engineer. The contractor abandoned the works and it was reported that a new contractor was identified to continue the work. There is no community involvement in the project and attempts by the administration to follow up on the completion of the project have been futile. The works should be expedited to avoid further degradation

County Government Response

The walls are too weak to carry a steel roof. Contractor has expresses disinterest in the project. See annexed letter on status



Project Name: Obuolo Youth Polytechnic

Sub County: Kisumu East

Ward: Kajulu

Project Activity: Construction of Two Classroom and Administration Block

INITIAL ASSESSMENT



Assessment date

7th September 2015

Total funds awarded

4,814,810.00

Total funds spent

2,134,868.00

Outstanding Balance

2,679,942.00

Project Classification

Category B

Project Status

Incomplete and not in use



NTA Findings

A poorly implemented project that has twice been reinstated due to poor workmanship and use of inferior quality materials. Structure members collapsed and had to be reconstructed. The project was behind schedule despite adequate budgetary allocation. The room sizes, doors, windows and ventilation were however adequately provided for.

County Government Response

This was a LASDAP Project that was transitioned to the County with inadequate budgetary allocation calling for redesign and adjustments. Due to competing priorities no money was allocated to this project in the 2015/16 Financial Year.



Project Name: Obuolo Youth Polytechnic

Sub County: Kisumu East

Ward: Kajulu

Project Activity: Construction of Two Classrooms & Administration Block

FOLLOW UP ASSESSMENT



Assessment date
7th November 2016

Total funds awarded
4,814,810.00

Total funds spent
2,134,868.00

Outstanding Balance
2,679,942.00

Project Classification
Category D



Project Status
Incomplete and not in use

NTA Findings

A poorly executed project with poor quality materials. The blocks are disintegrating due to exposure to harsh weather and sections of the walls have collapsed. The walls are not plumb and the columns not well vibrated. The veranda's wide and not supported by steel bars. The project site is unsanitary and is used for OD by neighbours



County Government Response

The completion of the project to be expedited. See annexed a status letter from the Chief Officer ECDE and Youth Polytechnics

Project Name: Nyakoko Dispensary

Sub County: Muhoroni

Ward: Miwani

Project Activity: Construction of Dispensary Block (New)

INITIAL ASSESSMENT



Assessment date

3rd September, 2015

Total funds awarded

5,773,190.00

Total funds spent

1,802,121.00

Outstanding Balance

3,971,069.00

Project Classification

Category D



Project Status

Incomplete and not in use

NTA findings

The quality of construction materials used is good and enough provisions for windows and doors, there are no structural failures visible. However, the project is behind schedule as it has been abandoned for over six months and steel elements are exposed to deterioration from harsh weather.

County Government's Response

The Director M&E committed to expedite the works to completion.



Project Name: Nyakoko Dispensary

Sub County: Muhoroni

Ward: Miwani

Project Activity: Construction of Dispensary Block (New)

FOLLOW UP ASSESSMENT



Assessment date

10th November 2016

Total funds awarded

5,773,190.00

Total funds spent

1,802,121.00

Outstanding Balance

3,971,069.00

Project Classification

Category G



Project Status

Incomplete and not in use

NTA Findings

The project was at finishes stage. Good quality materials used with provisions for standard project specifications. The works need to be expedited to completion

County Government's Response

The completion of the project to be expedited in 2016/17 as there is a budgetary allocation for its completion. See annexed letter with detailed response from the Project Manager.

Project Name: Orongo Dispensary

Sub County: Kisumu East

Ward: Kolwa East

Project Activity: Construction of Treatment Block

INITIAL ASSESSMENT



Assessment date

18th September 2015

Total funds awarded

2,286,191.80

Total funds spent

2,286,191.80

Outstanding Balance

Nil

Project Classification

Category C



Project Status

Ongoing and not in use

NTA Findings

A well implemented project exhibiting good workmanship with appropriate choice of materials, except grills. Good quality sand and quarry stones were used. Roofing structure done in good quality cypress and HG iron sheets. Safety standards have been adhered to. Finishes still pending although the works so far executed exhibit value for money



Project Name: Orongo Dispensary

Sub County: Kisumu East

Ward: Kolwa East

Project Activity: Construction of Treatment Block

FOLLOW UP ASSESSMENT



Assessment date
8th November 2016

Total funds awarded
2,286,191.80

Total funds spent
1,572,372.00

Outstanding Balance
713,819.80

Project Classification
Category G



Project Status
Incomplete and not in use

NTA Findings

The project has taken long before completion. The contractor left the site already. The Room sizes are small with small doors that are opening towards the inside fitted. These do not conform to safety standards. No BQ, project plan or contract on site and the HFMC are not aware of the scope of the project

County Government Response

Chief Officer Health to avail priced BQ and site plan to the facility for reference. The completion of the project to be expedited in 2016/17 as per the annexed status letter by the Project Manager



Project Name: Kiboswa Community Hall

Sub County: Kisumu West

Ward: North Kisumu

Project Activity: Construction of a Community Hall

INITIAL ASSESSMENT



Assessment date
7th September 2015

Total funds awarded
3,000,000.00

Total funds spent
Nil

Outstanding Balance
3,000,000.00

Project Classification
Category C



Project Status
Incomplete and not in use

NTA Findings

Good quality well dressed walling stones were used for the ground structure, well done columns and beams although column starter bars were exposed to corrosion, emergency exit provided. The project seemingly is well implemented but stalled.



Project Name: Kiboswa Community Hall

Sub County: Kisumu West

Ward: North Kisumu

Project Activity: Construction of a Community Hall

FOLLOW UP ASSESSMENT



Assessment date
7th November 2016

Total funds awarded
3,000,000.00

Total funds spent
1,977,447.00

Outstanding Balance
1,022,553.00

Project Classification
Category G

Project Status
Complete and not in use



NTA Findings

The project has stalled at the finished level. The project specifications were standard except the head room height was low. The window grills should have been permanently welded on the window shutter for security reasons especially during emergencies, being a social place. Good quality materials were used for the ground structure but low quality blocks were used on the first floor. The columns (first floor) were not well concreted and vibrated.

County Government Response

Delayed payment by the County Government has led to contractor's disinterest in the works. A termination letter to be done by CO-Gender & Culture, and the retendering process initiated. See annexed a status letter.

Project Name: Katito Youth Polytechnic

Sub County: Nyakach

Ward: North Nyakach

Project Activity: Construction of a Dormitory

INITIAL ASSESSMENT



Assessment date

10th September, 2015



Project Status

Incomplete and in use

Total funds awarded

2,477,514.00

NTA findings

There were no works going on at the site when NTA visited the project

Total funds spent

2,477,514.00

Outstanding Balance

Nil

Project Classification

Category E

County Government's Response

The Chief Officer in-charge of ECDEs and Youth Polytechnics reported that stakeholders suggested a classroom but then they (community) found another donor to do it. When the County held a stakeholders' meeting at the institution, the community suggested a dormitory which was at slab level (25%) - as at 20th January 2015. The delay in the implementation of this project has been due to the above reason and the fact that the design process also took longer than planned.

Project Name: Katito Youth Polytechnic

Sub County: Nyakach

Ward: North Nyakach

Project Activity: Construction of a Dormitory

FOLLOW UP ASSESSMENT



Assessment date
3rd November 2016

Project Status
Incomplete and in use

Total funds awarded
2,477,514.00

Total funds spent
2,477,514.00

Outstanding Balance
Nil

Project Classification
Category G

NTA Findings

The project was at the roofing stage and exposed to deterioration. Good quality materials used with provisions for standard project specifications, except prolonged exposure of the trusses to harsh weather compromising their suitability for roofing. The works need to be expedited to completion

County Government's Response

The contractor has raised a certificate of payment though has not been paid. The Chief Officer concurs that the trusses should be replaced before roofing is done. See annexed a status letter by the Chief Officer on the project.



Project Name: Milenye Dispensary

Sub County: Muhoroni

Ward: Miwani

Project Activity: Construction of Maternity Block

INITIAL ASSESSMENT



Assessment date
4th September 2015

Total funds awarded
4,000,000.00

Total funds spent
2,582,439.00

Outstanding Balance
1,417,561.00

Project Classification
Category C



Project Status
Incomplete and not in use

NTA findings

The project was implemented using good quality materials; walling was done using concrete blocks, beams were well constructed using standard materials. There were provisions for sufficient ventilation and natural lighting but the project is exposed to harsh weather. The access road needs urgent repair

County Government's Response

The Director, Roads and Public Works reported that the County has now given priority to roads leading to social amenities like schools, health facilities and markets following a directive by H.E. The Governor, and this particular road is top of the list.



Project Name: Milenye Dispensary

Sub County: Muhoroni

Ward: Nyangoma Masogo

Project Activity: Construction of Maternity Block

FOLLOW UP ASSESSMENT



Assessment date
10th November 2016

Project Status
Incomplete and not in use

Total funds awarded
4,000,000.00

Total funds spent
2,582,439.00

Outstanding Balance
1,417,561.00

Project Classification
Category G

NTA Findings

The project is at finishes stage. Good quality materials were used with standard provisions of project specifications and safety. However, the design was poor leading to flooding of open area during rainy seasons. There was a major crack on the wall at the joint between the main block and the washing area. The access road was repaired and in motorable condition.

County Government's Response

Defects to be corrected when project is allocated funds. A floor trap will be fitted to drain the open courtyard. See annexed letter from the Project Manager on the status on the project



Project Name: Lwala Kadawa Dispensary

Sub County: Kisumu West

Ward: West Kisumu

Project Activity: Construction of maternity block

INITIAL ASSESSMENT



Assessment date
8th September 2015



Project Status
Incomplete and not in use

Total funds awarded
7,385,845.00

Total funds spent
3,661,350.00

Outstanding Balance
3,724,495.00

Project Classification
Category C

NTA Findings

The project was still ongoing at the time of assessment, external plumbing works were underway. The workmanship was good. Vents, doors and windows were done to the required Standard. Although the project was implemented within the estimated cost, there were no BQs or drawings for verifications.



Project Name: Lwala Kadawa Dispensary

Sub County: Kisumu West

Ward: West Kisumu

Project Activity: Construction of maternity block

FOLLOW UP ASSESSMENT



Assessment date
9th November 2016

Project Status
Incomplete and in use

Total funds awarded
7,385,845.00

Total funds spent
3,661,350.00

Outstanding Balance
3,724,495.00

Project Classification
Category G

NTA Findings

The project exhibited good workmanship except the paint was already peeling off. The finishes have taken too long to complete. Safety standards were met except the design of the project was poor, room sizes small and no adequate provision for windows causing stuffiness. The open space in the veranda floods during rainy season and should be sealed. The washing area, toilets and bathrooms were incomplete

County Government Response

Change of design or any mitigatory measure to be given priority in 2016/17 due to lack of an allocation in the current FY



Project Name: Sondu Atela Market

Sub County: Nyakach

Ward: South Nyakach

Project Activity: Landscaping and drainage works

INITIAL ASSESSMENT



Assessment date

11th September, 2015

Total funds awarded

2,447,984.00

Total funds spent

1,929,683.00

Outstanding Balance

518,265.00

Project Classification

Category E



Project Status

Incomplete and in use

NTA findings

There were no works going on at the site during the initial assessment

County Government's Response

The Chief Officer, Trade admitted that the project has had issues. He reported that the contract was awarded to a new contractor after the first contractor abdicated duty. The CO thereafter visited the project site with County Engineer and measured works were paid then the contract was terminated as the contractor lacked capacity to undertake the work and was not going as per the schedule. Works by the new contractor resumed in February 2016.

Project Name: Sondu Atela Market

Sub County: Nyakach

Ward: South Nyakach

Project Activity: Landscaping and drainage works

FOLLOW UP ASSESSMENT



Assessment date

8th November 2016

Total funds awarded

2,447,984.00

Total funds spent

1,929,683.00

Outstanding Balance

518,265.00

Project Classification

Category G



Project Status

Incomplete and in use

NTA Findings

The project has stalled over non-payment. The workmanship was fair with good choice of materials. The drainage sizes are of minimum length with four openings adequate for the market. Some sections of the walls are not plastered thus exposed to harsh weather. The project has taken too long to complete and contractor has abandoned the works

County Government's Response

See annexed letter by Chief Officer, Trade on the status of the project



Challenges

1. Access to information challenges – pertinent projects documents like BQs, contracts, and plans were unavailable.
2. Facilities/institutions authorities were unaware of the projects prior to implementation. They did not have the projects documentation as well.
3. NTA did not receive timely responses to the correspondences to the county i.e the turnaround time for the county to respond to queries is slow.
4. Under quoting by some of the contractors and underfunding by county government has led to delays and in some cases projects being abandoned.

Recommendations

1. It is recommended that technical officers (chief officers), facilities and institutions need to keep duplicate files of projects documents in their offices.
2. There is need for sensitization of facilities/institutions authorities to access information about the projects.
3. The contractors should be visiting the project sites before quotation for any specific projects.

Lessons learnt

Willingness of the county to collaborate and act on issues identified for action by partners like NTA

Conclusion

This pilot assessment of county expenditures on infrastructure projects reveals significant successes as well as challenges in the management of public resources.

NTA hopes that moving forward counties will adopt the recommendations to improve on project implementation for better outcomes towards better livelihoods for Kenyans.

Annex : Correspondence with county government officials

Gita
Copy

14th November, 2016

The County Secretary,
County Government of Kisumu
P.O BOX 2738-40100
KISUMU



Dear Sir,

RE: CONSTRUCTIVE ENGAGEMENT MEETING ON FOLLOW UP CITIZEN REPORT CARD (CRC)

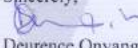
The National Taxpayers Association (NTA) is an independent, non-partisan organization focused on promoting good governance in Kenya through citizen empowerment, enhancing public service delivery and partnership building. Since 2006 NTA has implemented programmes focused on building citizen demand and strengthening government service delivery performance to enhance accountability through monitoring of the quality of public services and management of devolved funds. NTA envisions an accountable, citizen-responsive government delivering quality services. Its mission is to promote accountable, effective and efficient collection and utilization of public resources through citizen empowerment, enhancing public service delivery and partnership building.

As you are aware, NTA is conducting follow up assessment on selected projects funded by the County Government of Kisumu, having launched the initial assessment report successfully. The data collection is complete and a draft report has been compiled.

The purpose of this letter is to request you to invite the respective Chief Officers (Health, Education, Water, Roads and Public Works, Trade, Energy and Social Development) to a half day review meeting to give technical feedback on the draft report and provide additional or missing information on some of the projects monitored by NTA. The proposed review meeting will take place on **23rd November 2016** at the **County Secretary's Boardroom** from **0900hrs – 1300hrs**. For any further clarifications, contact the undersigned on **0701946550** or email **donvango@nta.or.ke**.

Thank you for your continued support and cooperation. We hope to continue working with you to enhance transparency, efficiency and effectiveness in the management of public resources.

Sincerely,


Deurence Onyango
Regional Coordinator – Nyanza
National Taxpayers Association

The NTA is a national, volunteer-based, independent and non-partisan organization established to improve the delivery of services and the management of devolved funds for the benefit of all Kenyans.

NTA is a citizen initiative currently steered by the following National Governing Council members: Kenya Private Sector Alliance (KEPSA) - Chair, National Informal Sector Coalition (NISCO) - Vice Chair, Institute of Certified Public Accountants of Kenya (ICPAK) - Treasurer, Centre for Governance and Development (CGD) - Secretary, Kenya Female Advisory Organization (KEFEADO) - Deputy Secretary, Supreme Council of Kenya Muslims (SUPKEM) - Member, Kenya Private Sector Network (KPSA Network) - Member, African Woman and Child Feature Service (AWCFS) - Member, United Business Association (UBA) - Member, Catholic Justice & Peace Commission (CJPC), Kenya Alliance of Resident Associations (KARA) and Transparency International Kenya (TI-K) - Member.

National Taxpayers Association, Nyanza Region - Nairobi Road, Nakumatt Mega City, Mezzanine Floor - P.O. Box 204-40123, Kisumu.
Tel: 0701 946 550 / 057 2028171 - Website: www.nta.or.ke



Gr2
File Copy

15th November, 2016

Mr. Kasera, C,
The Chief Finance Officer,
County Government of Kisumu
P.O BOX 2738-40100
KISUMU



Dear Sir,

**RE: REQUEST FOR FINANCIAL INFORMATION ON KISUMU COUNTY
PROJECTS MONITORED BY NTA**

The National Taxpayers Association (NTA) is an independent, non-partisan organization focused on promoting good governance in Kenya through citizen empowerment, enhancing public service delivery and partnership building. Since 2006 NTA has implemented programmes focused on building citizen demand and strengthening government service delivery performance to enhance accountability through monitoring of the quality of public services and management of devolved funds. NTA envisions an accountable, citizen-responsive government delivering quality services. Its mission is to promote accountable, effective and efficient collection and utilization of public resources through citizen empowerment, enhancing public service delivery and partnership building.

As you are aware, NTA has been monitoring selected projects in Kisumu County with the aim of promoting good governance, transparency and accountability in the management of public funds at the sub-national level. To this end, NTA successfully launched the initial report and embarked to follow-up assessment of selected projects (*see attached list*), of which data collection is complete. We are now in the process of compiling a draft report for a technical review on 23rd November 2016 at the County Secretary's Boardroom from 0900hrs by county government officials.

The purpose of this letter therefore is to request you to invite you to the review meeting and request for up-to-date financial data on the selected projects such as the **amount allocated/awarded** to the individual projects, **how much has been paid to contractors** and **the balance if any** to enable us fine tune the draft report. We also request for clarification on the eight projects that were not budgeted for (*see end of attached list*). For any further clarifications, contact the undersigned on 0701946550 or email donvango@nta.or.ke.

The NTA remains committed to objective, evidence-based reporting on service delivery performance to all stakeholders. We hope to work with you to enhance transparency, efficiency and effectiveness in the management of public resources.

Sincerely,



Deurence Onyango
Regional Coordinator – Nyanza
National Taxpayers Association

The NTA is a national, volunteer-based, independent and non-partisan organization established to improve the delivery of services and the management of devolved funds for the benefit of all Kenyans.

NTA is a citizen initiative currently steered by the following National Governing Council members: Kenya Private Sector Alliance (KEPSA) - Chair, National Informal Sector Coalition (NISCO) - Vice Chair, Institute of Certified Public Accountants of Kenya (ICPAK) - Treasurer, Centre for Governance and Development (CGD) - Secretary, Kenya Female Advisory Organization (KFEADO) - Deputy Secretary, Supreme Council of Kenya Muslims (SUPKEM) - Member, Kenya Private Sector Network (KPSA Network) - Member, African Woman and Child Feature Service (AWCFS) - Member, United Business Association (UBA) - Member, Catholic Justice & Peace Commission (CJPC), Kenya Alliance of Resident Associations (KARA) and Transparency International Kenya (TI-K) - Member.

National Taxpayers Association, Nyanza Region - Nairobi Road, Nakumatt Mega City, Mezzanine Floor - P.O. Box 204-40123, Kisumu.
Tel: 0701 946 550 / 057 2028171 - Website: www.nta.or.ke

REPUBLIC OF KENYA



THE COUNTY GOVERNMENT OF KISUMU

Office of the County Secretary, Head of County Public Service and Secretary to the Executive Committee

CGK/CS/ADM/18/VOL.II/136

8th August, 2016

THE NATIONAL COORDINATOR
NATIONAL TAXPAYERS ASSOCIATION
P. O. BOX 4037 – 00506
NAIROBI

RE: COMMENTS ON THE KISUMU COUNTY CITIZENS REPORT CARD

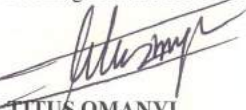
This is to acknowledge receipt of the attached Kisumu County Citizens Report Card (CRC) and would wish to register our utmost appreciation of good work of your Association. The findings expressed in the audit report are correct and true position of our County Government save for two area of classification.

The projects referred to as ghost and abandoned are misrepresentation of facts on the ground and in records. We would wish to state categorically that the projects referred as ghost were in the County budget but were never awarded to any contractor for implementation due to shortfall in revenue collection.

The projects include; - the Construction of a workshop at Kigoche Youth Polytechnic, Landscaping at Sondu Atela Market, Construction of Workshop at Kaitito Youth Polytechnic and Sola security lights installation at Pap Onditi totaling to Kshs. 9,062, 324.00.

You may also wish to note that the three ((3) projects referred as abandoned are ongoing projects both on ground and in records. These are: - Construction of Doctors residence in Nyang'oma Masogo ward, Construction of Community Hall in Kisumu North Ward and Construction of Maternity Wing in North Nyakach totaling to Kshs. 303, 715.00

Looking forward for continued partnership in promoting good governance.



TITUS OMANYI
FOR: COUNTY SECRETARY

CC. HE THE GOVERNOR





25th October, 2016

H.E Hon. Jack Nyanungo Ranguma
The Governor
Kisumu County
KISUMU

Dear Hon Ranguma,

RE: KISUMU COUNTY CITIZEN REPORT CARD (CRC) FOLLOW UP ASSESSMENT

The National Taxpayers Association (NTA) is a national, independent and non-partisan organization committed to working in partnership with the government and other stakeholders to promote transparency, effectiveness and accountability in the use of public resources. With the advent of devolution, NTA focused on counties and carried out an initial pilot phase to assess performance of five counties namely; Kisumu, Busia, Kitui, Kwale and Nyeri. The NTA has commenced the process of compiling and disseminating follow up Citizens' Report Cards on the management of devolved funds in the above mentioned five counties across Kenya.

NTA is now rolling out a follow up assessment of its county funds monitoring programme in Kisumu, the county that you represent. NTA wishes to inform you of the exercise within the month November and requests for your support to make it a success. This is an honor we accord to you as the patron of the county funds in the county. NTA will visit the county offices to obtain, among other things, up-to-date project implementation status reports and copies of supporting documentation including the bills of quantities, contracts, work programs and scope of works for the attached projects. We would also be grateful to have a county official/representative to accompany the NTA team to the project sites (*see attached schedule*). For any enquiries, please contact the undersigned on +254 701 946 550 or donyango@nta.or.ke.

NTA remains committed to objective, evidence-based reporting on county performance to the public and seeks to improve the performance of public funds in Kisumu County.

We look forward to a fruitful engagement with your office in this process.

Yours Faithfully,

Deurence Onyango
Regional Coordinator, Nyanza
National Taxpayers Association (NTA)

—Cc: County Secretary, County Government of Kisumu

The NTA is a national, volunteer-based, independent and non-partisan organization established to improve the delivery of services and the management of devolved funds for the benefit of all Kenyans.

NTA is a citizen initiative currently steered by the following National Governing Council members: Kenya Private Sector Alliance (KEPSA) - Chair, National Informal Sector Coalition (NISCO) - Vice Chair, Institute of Certified Public Accountants of Kenya (ICPAK) - Treasurer, Centre for Governance and Development (CGD) - Secretary, Kenya Female Advisory Organization (KEFAAO) - Deputy Secretary, Supreme Council of Kenya Muslims (SUPKEMA) - Member, Kenya Private Sector Network (KPSA Network) - Member, African Woman and Child Feature Service (AWCFS) - Member, United Business Association (UBA) - Member, Catholic Justice & Peace Commission (CJPC), Kenya Alliance of Resident Associations (KARA) and Transparency International Kenya (TI-K) - Member.

National Taxpayers Association, Nyanza Region - Nairobi Road, Nakumatt Mega City, Mezzanine Floor - P.O. Box 204-60123, Kisumu.
Tel: 0701 946 550 / 057 2028171 - Website: www.nta.or.ke



COUNTY GOVERNMENT OF KISUMU

MINISTRY OF EDUCATION, YOUTH, CULTURE, AND SOCIAL DEVELOPMENT

P.O. BOX 2738 – 40100 KISUMU

Office of the Executive Member Education, Youth, Culture & Social Services

6TH September, 2016

The National Coordinator
National Taxpayers Association
P.O. Box 4037-05006

NAIROBI

RE-ALLOCATION OF SHS. 2,000,000.00 FROM KUSA YOUTH POLYTECHNIC TO ROTARY YOUTH TRAINING CENTRE

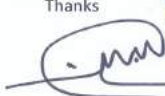
The above matter refers.

This is to inform you that in our 2014/15 budget, we had allocated Kshs. 2,000,000.00 for construction of new Youth Polytechnic at Kusa, Central Nyakach, however there was no justification to develop a new Youth Polytechnic when the existing one in the nearby vicinity at Alara didn't have students.

Arising from the aforesaid, the budgeted amount of Kshs. 2,000,000.00 was re-allocated to construct a boundary wall at Kisumu Rotary Youth Training Centre (Market Milimani Ward) in Kisumu Central Constituency.

This was necessary due to insecurity at the facility and influx of street children who would invade the centre and steal some property.

Thanks


DR. SAMWEL OKURO (Phd)
CHIEF OFFICER - EDUCATION
P.O. Box 2738-40100, KISUMU

Prosperity House (Former Nyanza Provincial Headquarters Building) 2nd Floor

P.O. Box 2738-40100 Kisumu City

E-mail: kisumucounty@kenya.go.ke



3rd November, 2016

The Governor,
County Government of Kisumu
P.O BOX 2738-40100
KISUMU



Dear Sir,

RE: REQUEST OF PROJECT DOCUMENTS FOR FOLLOW UP ASSESSMENT

The National Taxpayers Association (NTA) is an independent, non-partisan organization focused on promoting good governance in Kenya through citizen empowerment, enhancing public service delivery and partnership building. Since 2006 NTA has implemented programmes focused on building citizen demand and strengthening government service delivery performance to enhance accountability through monitoring of the quality of public services and management of devolved funds. NTA envisions an accountable, citizen-responsive government delivering quality services. Its mission is to promote accountable, effective and efficient collection and utilization of public resources through citizen empowerment, enhancing public service delivery and partnership building.

As you are aware, NTA is in the process of conducting a follow assessment of selected projects funded by the County Government of Kisumu, having launched the initial assessment report successfully. Access to information is a key tenet to the assessment of projects and analysis of field data. We recognize your role in making requested information available to us.

The purpose of this letter therefore is to request the following documents for the attached list of projects: contracts, bills of quantities, scope of works, works programme, contract variations if any and budget detailing the amounts allocated, amounts awarded and any pending balances unpaid to the contractor per project. NTA will use this information solely for assessment purposes. For any further clarifications, contact the undersigned on 0701946550 or email donvango@nta.or.ke.

The NTA remains committed to objective, evidence-based reporting on service delivery performance to all stakeholders. We hope to work with you to enhance transparency, efficiency and effectiveness in the management of public resources.

Sincerely,

Deurence Onyango
Regional Coordinator – Nyanza
National Taxpayers Association
Cc: County Secretary

Director M&E

The NTA is a national, volunteer-based, independent and non-partisan organization established to improve the delivery of services and the management of devolved funds for the benefit of all Kenyans.

NTA is a citizen initiative currently steered by the following National Governing Council members: Kenya Private Sector Alliance (KEPSA) - Chair, National Informal Sector Coalition (NISCO) - Vice Chair, Institute of Certified Public Accountants of Kenya (ICPAK) - Treasurer, Centre for Governance and Development (CGD) - Secretary, Kenya Female Advisory Organization (KEFEADO) - Deputy Secretary, Supreme Council of Kenya Muslims (SUPKEM) - Member, Kenya Private Sector Network (KPSA Network) - Member, African Woman and Child Feature Service (AWCFS) - Member, United Business Association (UBA) - Member, Catholic Justice & Peace Commission (CJPC), Kenya Alliance of Resident Associations (KARA) and Transparency International Kenya (TI-K) - Member.

National Taxpayers Association, Nyanza Region - Nairobi Road, Nakumatt Mega City, Mezzanine Floor - P.O. Box 204-40123, Kisumu.
Tel: 0701 946 550 / 057 2028171 - Website: www.nta.or.ke



COUNTY GOVERNMENT OF KISUMU
MINISTRY OF EDUCATION, YOUTH, CULTURE, AND SOCIAL DEVELOPMENT
P.O. BOX 2738 – 40100 KISUMU

Office of the Executive Member Education, Youth, Culture & Social Services

25th November, 2016

Chief Officer
The National Tax Payers Association
Diana Close, off ole odume Road
P.O. Box 4037 - 00506
NYAYO STADIUM
NAIROBI KENYA

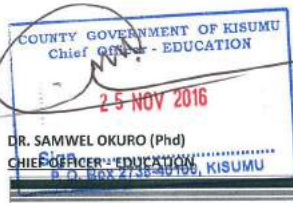


KISUMU COUNTY CITIZENS REPORT CARD

Attached find a report on the six stated Vocational Training Centres as per your request.

| S/NO | PROJECT NAME | STATUS | REMARKS |
|------|---|---|---|
| 1 | Construction of Boundary Wall at Rotary Vocational Training Centre (Market Ward) | Due to the need specified in the report, Kshs. 2,000,000 was transferred from Kusa Youth Polytechnic to Rotary Youth to put up a wall. To complete the project requires Kshs. 4.5 million and what we had was Kshs. 2,000,000.00 hence the stagnation of the works. | More Kshs. 2,500,000 will be considered in the 2017/2018 budget to ensure the project is completed to the requirements of the BQs |
| 2 | Construction of Two Class Rooms and A Latrine (Kianja Youth Polytechnic (Kajulu Ward) | Works have resumed | The works has commenced as per the commitment letter of the contractor dated 23/11/2016 (attached) |
| 3 | Construction of Two Class Rooms and Administration Block at Obuolo Youth Polytechnic | The contract for completion of the project has been awarded and site handed over to contractor and completion works on going <ul style="list-style-type: none"> - Roofing works done - Construction of gable works ongoing - Steel windows and doors on going | The Engineer's advice is that the project is due for completion in one months' time |

| | | | |
|---|---|---|---|
| 4 | Construction of Multi-purpose Hall at Lunga Youth Polytechnic (West Seme Ward) | Due to findings in your report, the contractor has failed to commence the works The Contract has been terminated and the process of retendering to obtain a new contractor is on going | The contractor officially withdrew vide his letter dated 15 th September 2016 (Attached) To re-tender the project to another contractor |
| 5 | Construction of A Dormitory At Katito Youth Polytechnic (North Nyakach) | The contractor undertook the specified works upto Roof structure level where it stands to date | The contract is still following up payment for the works done, then resumes to completion |
| 6 | Construction of Two Class Rooms and Workshop at Koru Youth Polytechnic (Muhoroni Koru Ward) | The project is complete awaiting handing over | The contractor is awaiting final payment to allow the handing over be expedited. |



Prosperity House (Former Nyanza Provincial Headquarters Building) 2nd Floor
P.O. Box 2738-40100Kisumu City
E-mail: kisumucounty@kenya.go.ke



DAMIDA INVESTMENTS

Manufactures of: Quality exercise books, Exams, Billboards, Banners, Full colour printing
All stationeries, Office and general supplies.
P.O.Box 4752, Kisumu. Ring Road Millmani between Water & Jalaram academy Tel:0722-957495 / 0720-850986

Our Ref:.....

Your Ref:.....

23/11/2016
Date:.....

Chief Officer – Education
County Government of Kisumu
P.O Box 2738
Kisumu

Dear Sir,

RE: COMPLETION OF 2NO CLASSROOMS AT KIANJA YOUTH POLYTECHNIC

We refer to the above project and would like to state as follows:-

- 1) That there has been a little delay in completion due to some financial hitch.
- 2) That the work has now started and hope to complete within the following time lines:-

- ROOFING – BY 15TH DECEMBER 2016
- FINISHES – BY 31ST DECEMBER 2016

Yours faithfully

Benson Misati
Director





SILUMA ENTERPRISES LTD

P.O.BOX 6604-40100, KISUMU
General Building Contractors

Date: 15th September, 2016

THE CHIEF OFFICER EDUCATION
COUNTY GOVERNMENT OF KISUMU
KISUMU

Dear Sir,

RE: RE WITHDRAWAL FROM PROJECT EXECUTION-LUNGA POLYTECHNIC

We humbly write to withdraw our contract participation from the above mentioned project following our observation that revealed more quantities on the ground than what was captured in the Bill of Quantities priced by us.

We, however thank you for according us this opportunity and look forward to working with you in future.

Thanks for giving us this opportunity.

Yours faithfully,

OKWACH NARKISO LIGUNGA
TECHNICAL MANAGER





COUNTY GOVERNMENT OF KISUMU
MINISTRY OF EDUCATION, YOUTH, CULTURE, AND SOCIAL DEVELOPMENT
P.O. BOX 2738 – 40100 KISUMU

Office of the Executive Member Education, Youth, Culture & Social Services

REF: CGK/CH.OFF/G, C, & S/18/VOL.1

Date: 24th November, 2016

The National Coordinator
National Taxpayers Association
P.O. Box 4037 – 00506
NAIROBI

COMMENTS ON THE KISUMU COUNTY CITIZENS REPORT CARD

This is to appreciate the work done by the National Taxpayers Association. However, I wish to highlight the status of the projects under Gender, Culture & Sports Namely.

1. Nyagoma community Hall (Muhoroni Sub County
Nyagoma Masogo Ward

This project was fully implemented awaiting to be handed over to the community for use.

2. Nyahera Community Hall (Kisumu West Sub County, North Kisumu Ward).
Contract sum awarded at **Kshs. 1,999,840**

3.
 - Total value of works done **Kshs. 1,999,260**
The contractor completed all scope of work as indicated in the B.O.Q
 - 2nd phase allocation of **Kshs. 5 million** and expected to be done by December 2016.

4. Kiboswa Community Hall (Kisumu West North Kisumu Word, North Kisumu Ward)

This was a LASDAP project awarded to a contractor at a contract sum of **3million**
Total value of measured works at **Kshs. 2,382,925**.

The contractor is awaiting payment to complete in the BQ since the contractor is still on site we intend to allocate money to this project 2017/2018.



Lucy Matengo

CHIEF OFFICER – GENDER, CULTURE & SPORTS

Prosperity House (Former Nyanza Provincial Headquarters Building) 2nd Floor
P.O. Box 2738-40100Kisumu City
E-mail: kisumucounty@kenya.go.ke

REPUBLIC OF KENYA



COUNTY GOVERNMENT OF KISUMU

Office of the Chief Officer – Roads, Transport and Public Works

CGK/RT&PW/CO/GEN.CORR/38/VOL.I/83

29th November, 2016

The Regional Coordinator
NTA – NYANZA

RE: RESPONSE TO NATIONAL TAX PAYERS ASSOCIATION (NTA) REPORT

Above subject refers.

Attached herewith, please find response to various projects visited by your office.

Thank You.



OJWANG BENARD
Ag. DIRECTOR - ROADS AND PUBLIC WORKS

C.C. Chief Officer
HEALTH

| NO | PROJECT | RESPONSE |
|----|--|--|
| 1 | Lumumba Health Centre Construction of 32 – bed general ward | Completion was revised to January 2017 after reinstatement of the contractor The building has no structural problem. Workmanship is good. The project will be completed in this FY 2016/2017 |
| 2 | Orongo Dispensary | Completion of the project will be expedited FY 2016/17 |
| 3 | Arito Langi Dispensary | The crack on the partition shall be repaired by February 2017 The defect liability period of the project has however elapsed There is no budgetary allocation to do the access road to mitigate floods |
| 4 | Lwala Kadawa Dispensary | Completion of the project shall be fast tracked in the FY 2016/17 |
| 5 | Kinasia Dispensary – Renovation | Completion of the project is on-going Renovation works was scaled down after budget was slashed |
| 6 | Nyakoko Dispensary Construction of Dispensary Block | The project is to be completed in this FY 2016/17 |
| 7 | Miranga Dispensary Renovation works | The project was started by LATF There is no budgetary allocation currently to complete it to the required standards |
| 8 | Milenye Dispensary Construction of Maternity Block | The project is on-going However, there is no allocation in the current budget for completion Defects will be repaired in subsequent years when the project is allocated funds Floor trap to be fixed on to drain the open courtyard when funds are allocated |



REPUBLIC OF KENYA



COUNTY GOVERNMENT OF KISUMU

Office of the Chief Officer – Roads, Transport and Public Works

CGK/RT&PW/CO/GEN.CORR/38/VOL.I/84

29th November, 2016

The Regional Coordinator
NTA – NYANZA

SANGORO HYDROPOWER – OMBUGO ACCESS ROAD

Above subject refers.

The above road has been allocated 4 Million for improvement which will be carried out in this financial year 2016/17.

Thank you.

OJWANG BENARD
Ag. DIRECTOR - ROADS AND PUBLIC WORKS

C.C. Chief Officer
ROADS, TRANSPORT AND PUBLIC WORKS



THE COUNTY GOVERNMENT OF KISUMU

Department of Green Energy and Climate Change

DATE: 29th November, 2016

RE: REPORT ON SOLAR STREET LIGHT AT PAP-ONDITI

The integrated solar lights have no fault, and are functioning as they should. They are fitted with sensors that light up when the activities are there, but dim when activities reduce in the market centres. This is part of security fittings to deter theft. All Lights are still insured and can only be maintained after 3 years.

Green Energy & Climate Change

KISUMU
P. O. Box 2738 - 80100.
COUNTY GOVERNMENT OF KISUMU
GREEN ENERGY & CLIMATE CHANGE
CHIEF OFFICER

Prosperity House (Former Nyanza Provincial Headquarters Building) 2nd Floor

REPUBLIC OF KENYA



THE COUNTY GOVERNMENT OF KISUMU

Office of The Chief Officer Water

FROM: WATER DEPARTMENT

25/11/2016

TO: NATIONAL TAX PAYING ASSOCIATION (NTA).

PROJECT NAME: DAGO THIM URUDI WATER PROJECT

SUB – COUNTY: KISUMU WEST.

PROJECT ACTIVITY: REPAIR AND ERECTION OF ELEVATED STEEL TANK

TOTAL FUNDS AWARDED: 1,490,600 Kshs

TOTAL AMOUNT SPENT: 1,070,000 Kshs

VARIANCE: 420,600 Kshs.

PROJECT CLASSIFICATION: CATEGORY B

PROJECT STATUS: COMPLETE BUT NOT TESTED

RESPONSE FROM GOVERNMENT.

The works have not been tested due to lack of water which is as a result of two reasons

- (i) The existing pump has no capacity to deliver water to the tank at the existing head.
- (ii) Individual connections have been done on the rising main line thereby lowering the pressure hence further affecting the situation as in (i) above.

Remedy:

The County Government has allocated funds in the financial year 2016 – 2017 for the purchase of a bigger pump and pipes for the repair of the main line so that the consumers who are connected to the main line can be dislodged and be served from the distribution main.



George A. Koyier

Chief Officer - Water

Prosperity House (Former Nyanza Provincial Headquarters Building) 11th Floor
P.O. Box 2738-40100 Kisumu City : cell : +254(0) 0725036963
E-mail: gkoyier@yahoo.com

REPUBLIC OF KENYA



THE COUNTY GOVERNMENT OF KISUMU

(Office of the Chief Officer; Commerce, Tourism and Heritage)

Ref: CGK/CT&H/012/11/2016

25th November, 2016

NATIONAL TAXPAYERS ASSOCIATION
KISUMU

RE: STATUS REPORT DETAILING THE SONDU ATELA MARKET

| | |
|---|---|
| Scope of the work | Construction of Sondu Atela market Murraining and Paving of the market |
| Status of the work in terms of completion | 80% Completed |
| Total cost of the project | Kshs. 3,984,020 |
| What amount has been paid? | Kshs. 2,000,000 |
| What amount is yet to be paid? | Kshs. 1,984,020 |
| Termination Letter | Attached |
| Details of the current | RABMAS Enterprises P.O. Box 4737, Kisumu |



JACOB MUGA
CHIEF OFFICER



CC: CECM - Commerce, Tourism and Heritage

The Prosperity House(former Nyanza Provincial Headquarters Building) 1st Floor,
P.O. Box 27381-40100 KISUMU City, Tel. +254 713 029 632,
Email tourism@kisumu.go.ke or iacob.muga@yahoo.com

REPUBLIC OF KENYA



THE COUNTY GOVERNMENT OF KISUMU

(Office of the Chief Officer; Commerce, Tourism and Heritage)

Ref: CGK/CT&H/0007/07/2015

29th July, 2015

NORTHERN ENTERPRISES LTD
P.O. BOX 3538 - 40101
KISUMU

RE: TERMINATION LETTER – LANDSCAPING OF SONDU ATELA MARKET

Refer to the letter from Ministry of Roads, Transport and Public Works dated 23rd July, 2015 Contract Number *CGK/SE/NYK/05/2013/14* detailing a report on Landscaping of Sondu Market.

It was noted that you stopped working on the site for unknown reasons and as such it was recommended that you be terminated and the work be re-advertised with immediate effect.

This is therefore to notify you of the decision to terminate your services accordingly.

JACOB MUGA
CHIEF OFFICER



CC: CECM - Commerce, Tourism and Heritage

The Prosperity House(former Nyanza Provincial Headquarters Building) 1st Floor,
P.O. Box 27381-40100 KISUMU City, Tel. +254 713 029 632,
Email tourism@kisumu.go.ke or iacob.muga@yahoo.com



HEAD OFFICE

National Taxpayers Association (NTA)

Diani Close, Off Ole Odume Road | Gate No. 7, House No. 5
P. O. Box 4037 - 00506, Nyayo Stadium, Nairobi, Kenya
Cell Phone: 254-701-946557 | 254-734-500940
Email: admin@nta.or.ke | Website: www.nta.or.ke

Nairobi Regional Office

Diani Close, Off Ole Odume Road
Gate No. 7, House No. 5
P.O. Box 4037 - 00506 Nairobi
Cell Phone: 254-701-946556
Email: nairobi@nta.or.ke

Central Regional Office

Nyeri Teachers Plaza, 1st Floor,
Room 10
P.O. Box 567 - 10100 Nyeri
Cell Phone: 254-701-946544
Email: central@nta.or.ke

Eastern Regional Office

Town Plaza, 3rd Floor, Ngei Road
P.O. Box 2046- 90100 Machakos
Cell Phone: 254-701-946547
Email: eastern@nta.or.ke

Coast Regional Office

Kanderbhoy Building
Nkurumah Road, 1st Floor, Suite
14,
Opp Co-op Bank
P.O. Box 98860 Mombasa
Cell Phone: 254-701-946548
Email: coast@nta.or.ke

Rift Valley Regional Office

Meadows Hse, 1st Floor, Room
106
Opposite Sirikwa Hotel
P.O. Box 4956-301 00 Eldoret
Cell Phone: 254-701-946543
Email: riftvalley@nta.or.ke

North Eastern Regional Office

Diani Close, Off Ole Odume Road
Gate No. 7, House No. 5
P.O. Box 4037-00506 Nairobi
Cell Phone: 254-701-447448
Email: northeastern@nta.or.ke

Western Regional Office

Kakamoni Plaza, 1st Floor
Above Post Bank,
Canon Awori Street
Cell Phone: 254-701-946551
Email: western@nta.or.ke

Nyanza Regional Office

Nakumatt Mega City, Ground
Floor, Opp. Post Office
Nairobi Road
P.O. Box 204-40123 Kisumu
Cell Phone: 254-701-946550
Email: nyanza@nta.or.ke



National Taxpayers Association
pesa zetu, haki yetu

Supported by:



**german
cooperation**

DEUTSCHE ZUSAMMENARBEIT

giz

Deutsche Gesellschaft
für Internationale
Zusammenarbeit (GIZ) GmbH



**MINISTRY FOR FOREIGN
AFFAIRS OF FINLAND**